

# College Concepts

- - - Course syllabus | 2017-2018 - - -

## Course and Contact Information

2<sup>nd</sup> Hour: E-09 College Concepts

4<sup>th</sup> Hour: E-09 Algebra 2

5<sup>th</sup> Hour: E-09 Algebra 2

6<sup>th</sup> Hour: E-09 Algebra 2

Mrs. Talley

[talleyc@dearbornschools.org](mailto:talleyc@dearbornschools.org)

<http://iblog.dearbornschools.org/talley/>

313-827-8314

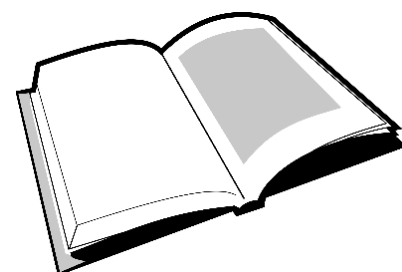


## Curriculum:

This class follows the HFCC College Algebra Course. The class is a year long class that will review and go deeper into Algebra topics to prepare you for college math courses.

## Supplies:

- 1" Binder
- 6 Dividers
- Loose Leaf Paper for Binder
- Graph Paper
- #2 Pencils with Erasers
- Nice to have: Individual Pencil Sharpener/Erasers/Highlighters/Ruler/Colored Pencils



## Assignments and Grading

95% - **Summative**

**(Tests, Quizzes, Projects)**

5% **Formative**

**(Homework, Class Activities, etc.)**

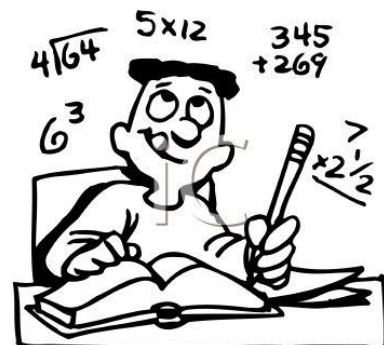
## Expectations



## Policy for Formative Assignments

The purpose of Formative Assignments is to learn, practice and prepare you to demonstrate your understanding of mathematical content and practices.

Due to the importance of formative work, *all students are expected to complete these assignments.*



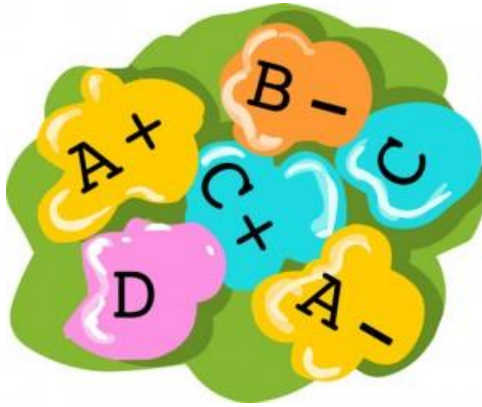
# Policies

- - - College Concepts | 2017-2018 - - -



## Grading Scale

A 93 – 100%  
A- 90 – 92%  
B+ 87 – 89%  
B 83 – 86%  
B- 80 – 82%  
C+ 77 – 79%  
C 73 – 76%  
C- 70 – 72%  
D+ 67 – 69%  
D 63 – 66%  
D- 60 – 62%  
E 59 – 0%



## Electronic Devices

I want you to be focused on the course while you are in my classroom. Using your cell phone or other electronic devices while in class interferes with your ability to be focused.

Any electronic device seen during class will be confiscated and turned into the main office at the end of the day for parent pick up.

## Class Policies

- Be present each day and arrive to class on time, The school attendance and tardy policies will be enforced.
- Bathroom passes will not be issued during instructional time or during the first 10 or last 10 minutes of class.
- There will be a comprehensive final exam at the end of each semester.



## Extra Help

- I am available before school from 6:45 am – 7:15 am by appointment
- The best way to get in contact with me is via email. You can expect a response within 24 hours.
- Check my blog often!
- You can follow me on Instagram
- DHSMathlady and on Snap Chat DHSmathlady