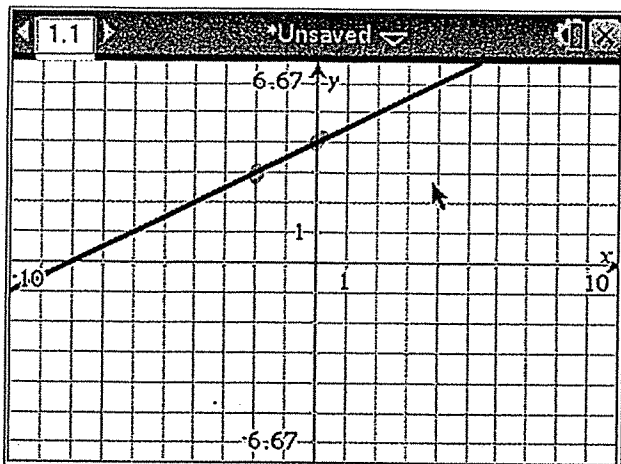


TA/1/54

Quizlet REVIEW (a little baby quiz on point slope form and little bit of slope intercept form)

5. Write an equation in point slope form for the following graph.



$M = \frac{1}{2}$

Point = $(-2, 3)$

Equation $y - 3 = \frac{1}{2}(x + 2)$

6. Identify a slope and a point from the equation $y - 2 = -(x + 6)$

$M = -1$

Point $(-6, 2)$

7. Determine if the data in the table is linear. If it is write an equation for the data in point slope form

X	Y
-2	4
-1	6
0	8
1	10
2	12

Linear? ☒ Yes ☐ No

$m = 2$

point = $(-2, 4)$

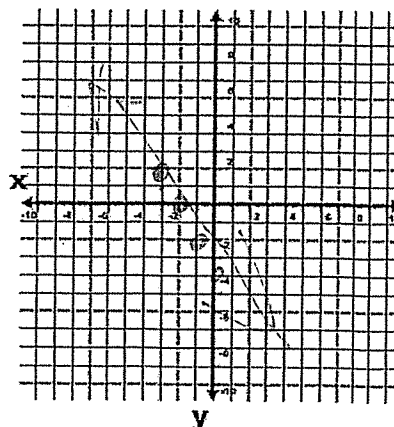
equation: $y - 4 = 2(x + 2)$

8.) Identify the point and slope from the equation to graph the line.

$y - 2 = -2(x + 3)$

$m = -2$

point = $(-3, 2)$



Quizlet REVIEW (a little baby quiz on point slope form and little bit of slope intercept form)

Mini Slope Quiz Review

Name _____

1. Identify each of the equations as being in slope-intercept form, point slope form or neither form.

$3x - 4y = -12$ Neither	$y = -3x + 4$ S.I.	$y - 5 = \frac{1}{2}(x + 7)$ P.S
----------------------------	-----------------------	-------------------------------------

2. Determine if the data in the table is linear. If it is write an equation for the data in slope intercept form.

X	Y
-2	4
-1	6
0	8
1	10
2	12

$-1 - -2 = 1$
 $6 - 4 = 2$
 $8 - 6 = 2$
 $10 - 8 = 2$
 $12 - 10 = 2$

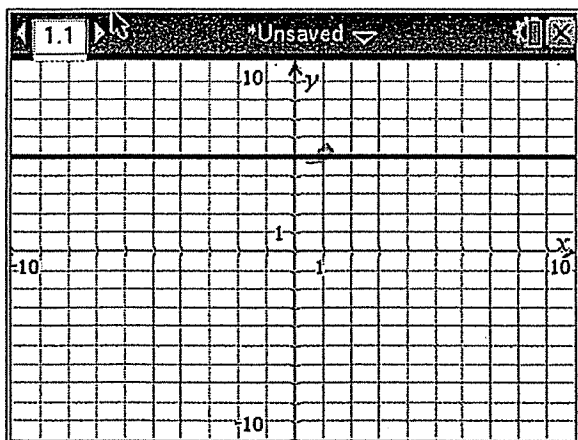
Linear? Yes No

$m = \frac{2}{1} = 2$

y-intercept = 8

equation $y = mx + b$: $y = 2x + 8$

3. Determine if each ordered pair is a solution to the linear equation graphed below.



(1, 5) Y

(-2, 5) Y

(0, -1) N

(-1, 6) N

Explain how you determined if the ordered pairs were solutions or not.

I plotted the points