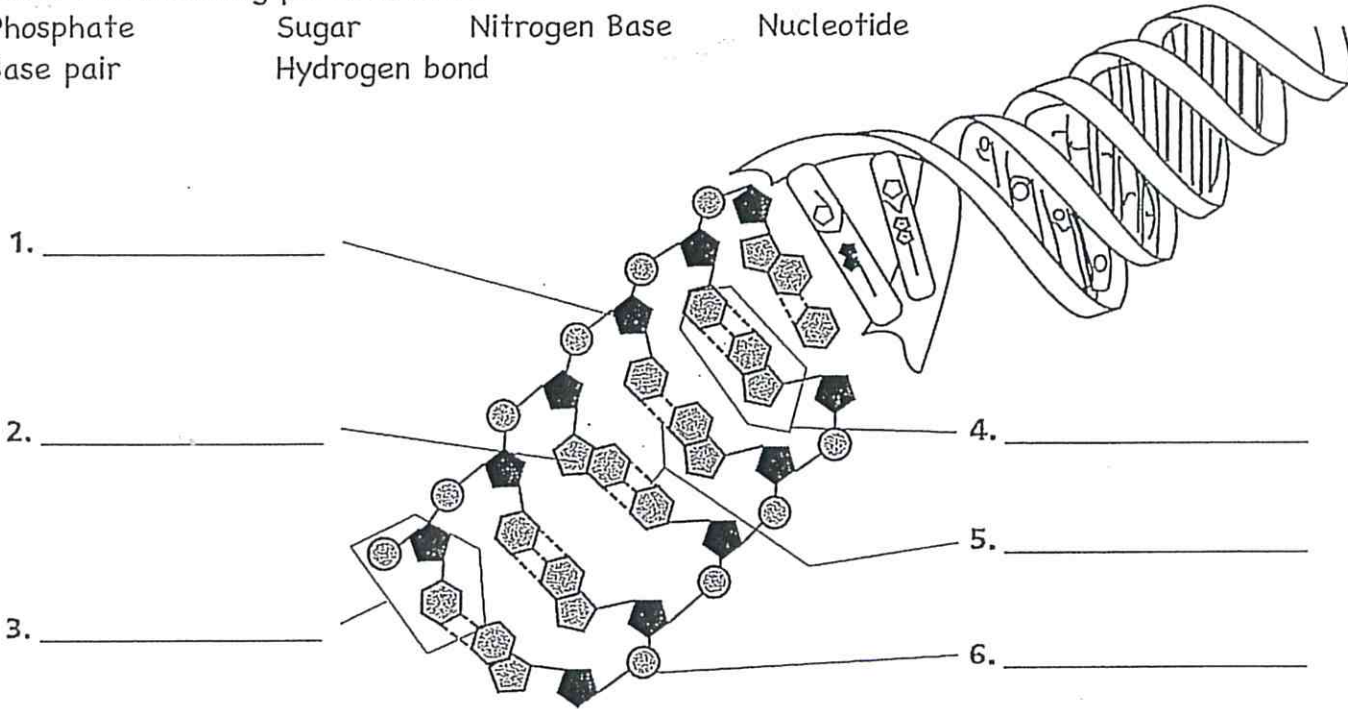


Notes
DNA Structure Worksheet

Label the following parts of DNA.

- | | | | |
|-----------|---------------|---------------|------------|
| Phosphate | Sugar | Nitrogen Base | Nucleotide |
| Base pair | Hydrogen bond | | |



- | | | |
|----------|--|----------|
| 1. _____ | | |
| 2. _____ | | 4. _____ |
| | | 5. _____ |
| 3. _____ | | 6. _____ |

A nucleotide is made of three parts. These three parts are:

1. _____ 2. _____ 3. _____

Write out the full name for DNA. _____

What are the sides of DNA made of? _____

What are the "rungs" of the DNA ladder made of? _____

Where is DNA located? _____

What is DNA? _____

How do the bases bond together? A bonds with _____ G bonds with _____

What are the two strands of DNA held together by? _____

_____ Based on the base pairing system, which of the following is/are true?

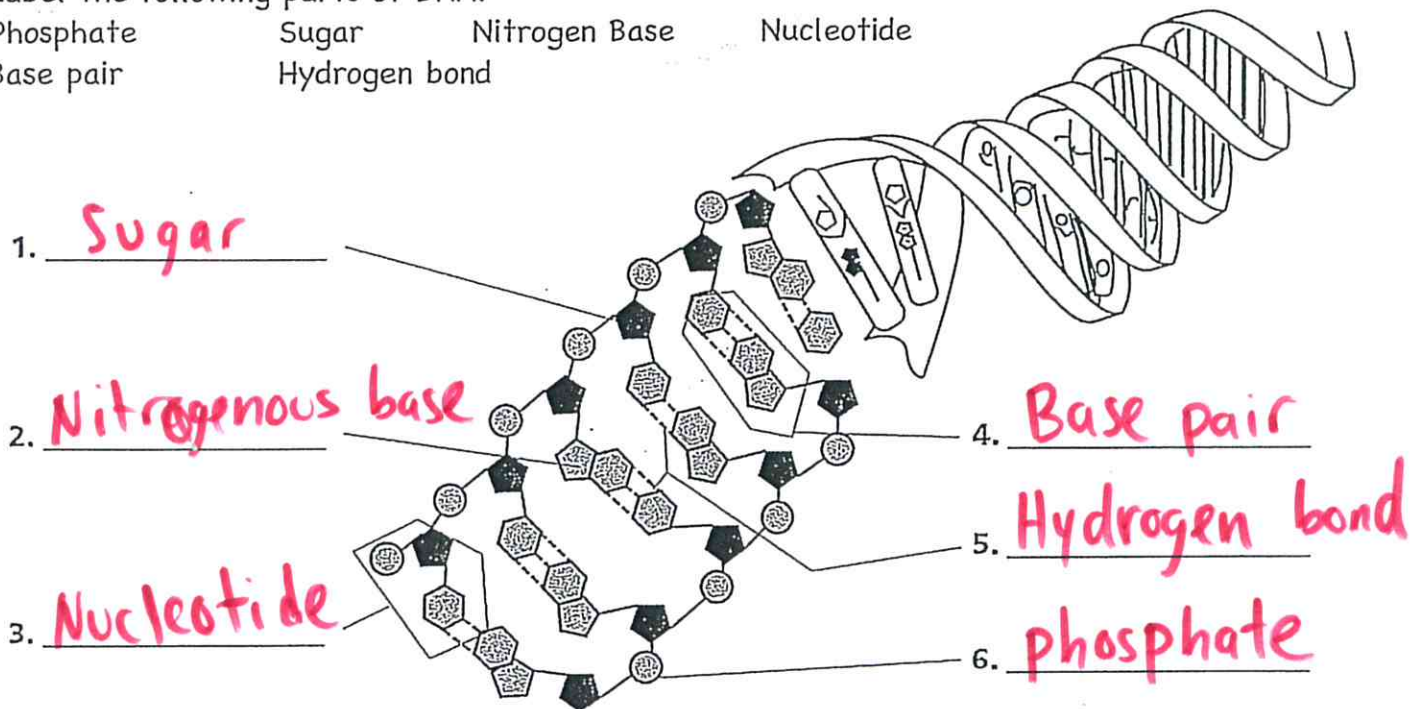
- A. Cells contain the same amount of T as A
- B. Cells contain the same amount of C as G
- C. Cells contain the same amount of T as G
- D. Cells contain the same amount of A as C

Key

Notes
DNA Structure Worksheet

Label the following parts of DNA.

- Phosphate Sugar Nitrogen Base Nucleotide
Base pair Hydrogen bond



A nucleotide is made of three parts. These three parts are:

1. sugar 2. phosphate 3. nitrogenous base

Write out the full name for DNA. Deoxyribonucleic Acid

What are the sides of DNA made of? Sugar & phosphate

What are the "rungs" of the DNA ladder made of? Nitrogenous bases (A, T, C, G)

Where is DNA located? Nucleus

What is DNA? Molecule that holds genetic makeup

How do the bases bond together? A bonds with T G bonds with C

Base-pairing rule

What are the two strands of DNA held together by? Hydrogen bonds

Based on the base pairing system, which of the following is/are true?

- A. Cells contain the same amount of T as A
- B. Cells contain the same amount of C as G
- C. Cells contain the same amount of T as G
- D. Cells contain the same amount of A as C

Chargaff's Law