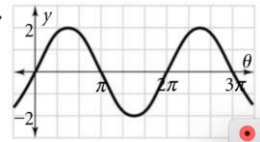


Name: _____ Hour: _____ Date: _____

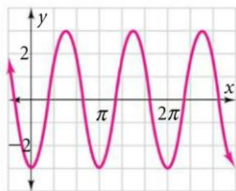
Sine and Cosine Practice

Write an equation for each of the given graphs.

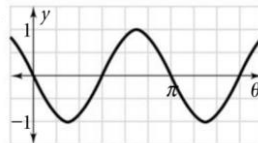
1)



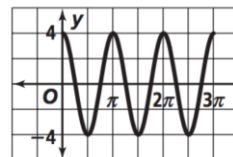
2)



3)



4)



5) A particular sound wave can be modeled by the function $y = 5\sin 4\theta$. Describe the amplitude and period of this sound wave.

6) Graph one cycle of the function $y = 2\sin 3\theta$.

7) Graph one cycle of the function $y = -4\cos\left(\frac{\theta}{2}\right)$

Write a sine equation for each of the following. Pick ONE to draw a graph of.

8) Amplitude = 8; Period = 3π

9) Amplitude = 4; Period = $\frac{\pi}{3}$

Write a cosine equation for each of the following. Pick ONE to draw a graph of.

10) Amplitude = 5; Period = 4

11) Amplitude = 1; Period = $\frac{2\pi}{3}$