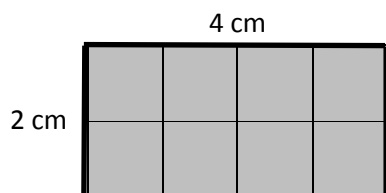


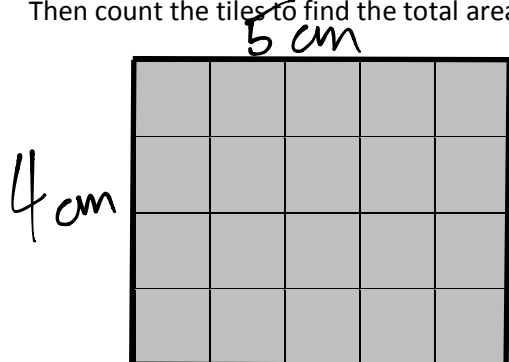
Name _____

Date _____

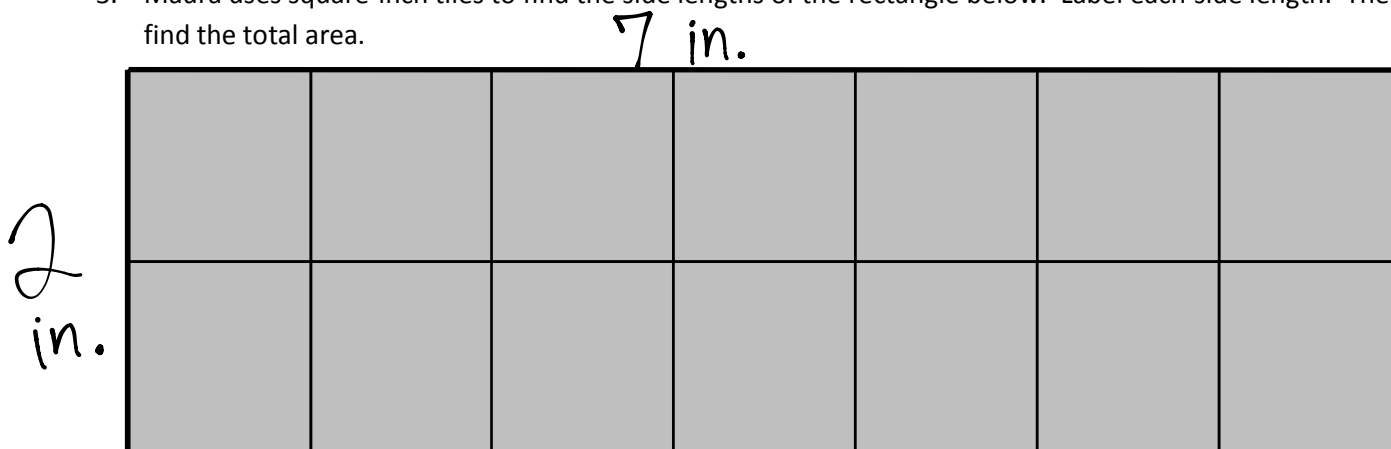
1. Ella placed square-centimeter tiles on the rectangle below, and then labeled the side lengths. What is the area of her rectangle?

Total area: 8 square cm.

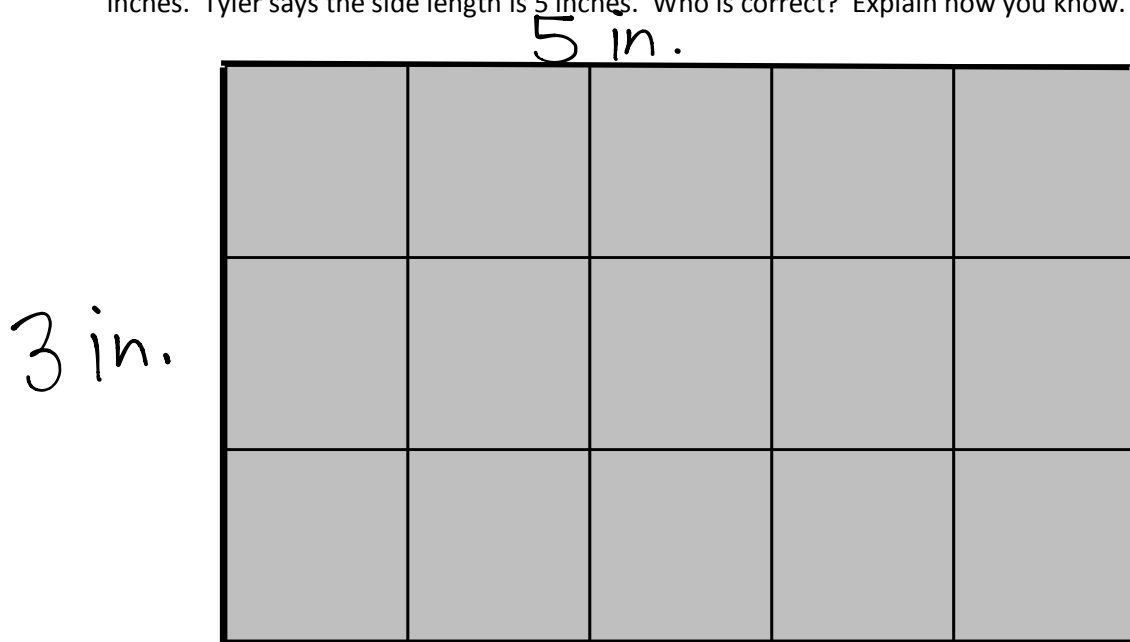
2. Kyle uses square-centimeter tiles to find the side lengths of the rectangle below. Label each side length. Then count the tiles to find the total area.

Total area: 20 sq. cm.

3. Maura uses square-inch tiles to find the side lengths of the rectangle below. Label each side length. Then find the total area.

Total area: 14 sq. in.

4. Each square unit below is 1 square inch. Claire says that the side length of the rectangle below is 3 inches. Tyler says the side length is 5 inches. Who is correct? Explain how you know.



Claire and Tyler are both correct because the rectangle has one side length of 3 inches and another side length of 5 inches.

5. Label the unknown side lengths for the rectangle below, then find the area. Explain how you used the lengths provided to find the unknown lengths and area.



Opposite sides of a rectangle have the same length.

2 inches