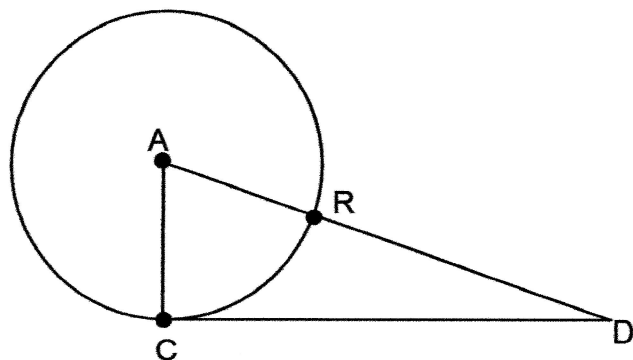
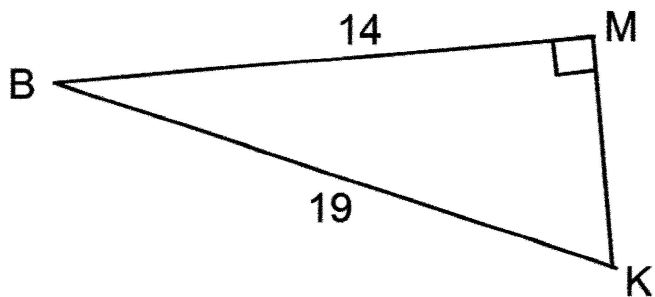


1. \overline{CD} is tangent to $\odot A$ at point C . The radius of the circle is 12 and $RD = 23$. Find the of \overline{CD} to the nearest hundredth.



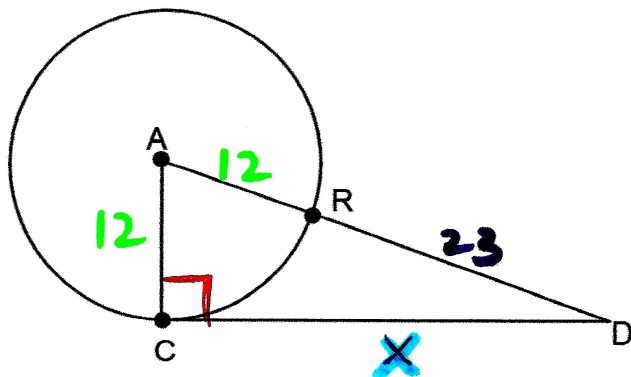
$CD =$

2. Find the measure of $\angle B$ to the nearest hundredth of a degree.

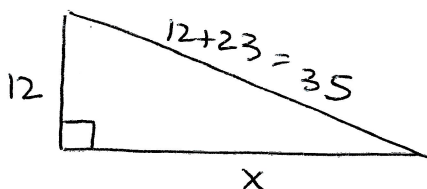


$m\angle B =$

1. \overline{CD} is tangent to $\odot A$ at point C . The radius of the circle is 12 and $RD = 23$. Find the of \overline{CD} to the nearest hundredth.



CD =

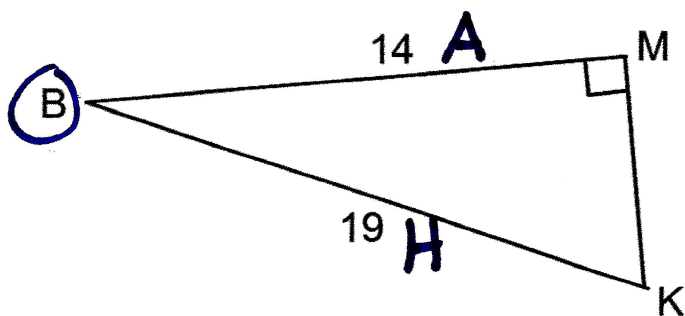


$$x^2 + 12^2 = 35^2$$

$$x^2 = 35^2 - 12^2$$

$$x = CD = 32.88$$

2. Find the measure of $\angle B$ to the nearest hundredth of a degree.



$$m\angle B = 42.54^\circ$$

SOH CAH TOA

$$\cos B = \frac{14}{19}$$

$$m\angle B = \cos^{-1}\left(\frac{14}{19}\right) = 42.54^\circ$$