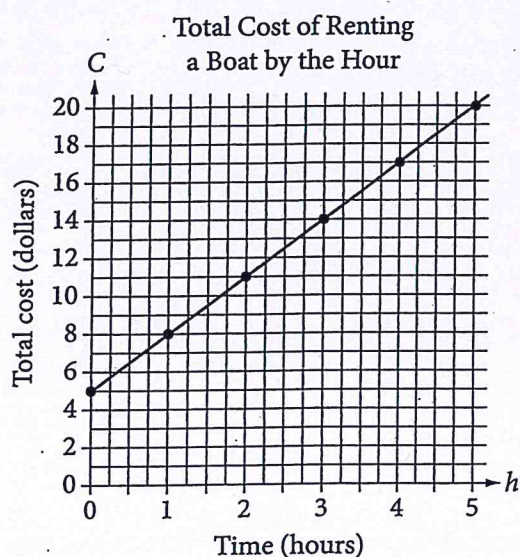




Geo SAT/PSAT practice Mon, March 23, 2020

Questions 15 and 16 refer to the following information.



The graph above displays the total cost C , in dollars, of renting a boat for h hours.

15

What does the C -intercept represent in the graph?

- A) The initial cost of renting the boat
- B) The total number of boats rented
- C) The total number of hours the boat is rented
- D) The increase in cost to rent the boat for each additional hour

16

Which of the following represents the relationship between h and C ?

- A) $C = 5h$
- B) $C = \frac{3}{4}h + 5$
- C) $C = 3h + 5$
- D) $h = 3C$

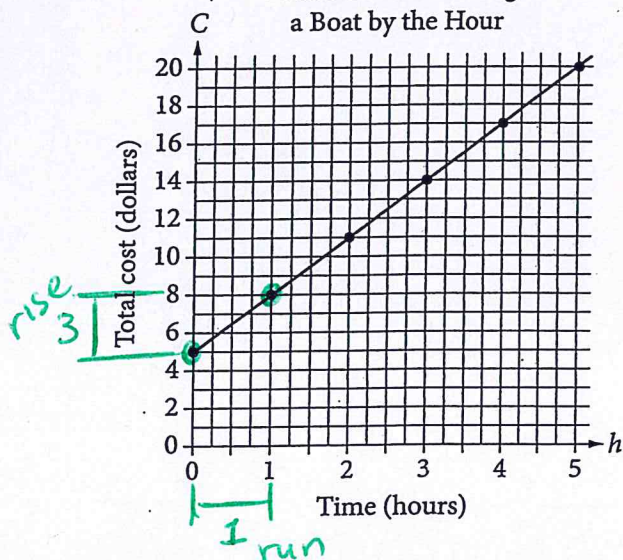


SAT/PSAT practice Mon, March 23, 2020

Answers

Questions 15 and 16 refer to the following information.

Total Cost of Renting
a Boat by the Hour



The graph above displays the total cost C , in dollars, of renting a boat for h hours.

15

What does the C -intercept represent in the graph?

- ☒ A) The initial cost of renting the boat
- ☐ B) The total number of boats rented
- ☐ C) The total number of hours the boat is rented
- ☐ D) The increase in cost to rent the boat for each additional hour

The C -intercept (y -intercept) represents the initial amount \rightarrow since this axis represents TOTAL COST (\$)

A is the answer

16

Which of the following represents the relationship between h and C ?

- A) $C = 5h$
- B) $C = \frac{3}{4}h + 5$
- ☒ C) $C = 3h + 5$
- D) $h = 3C$

if you were to write a $y = mx + b$ equation it would take the form
 $C = mh + b$

the y -int (C -int) = 5
therefore choices A & D are NOT correct

picking 2 points on the graph to find slope gives us

$$m = \frac{\text{rise}}{\text{run}} = \frac{3}{1} = 3$$

therefore **C** is the answer