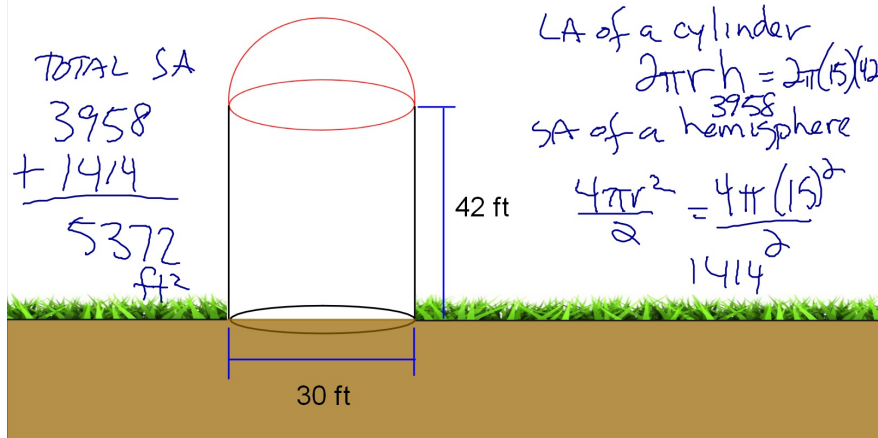
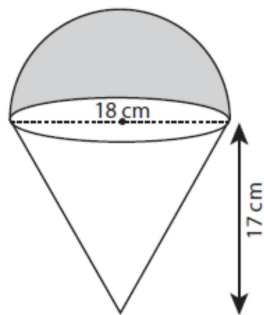
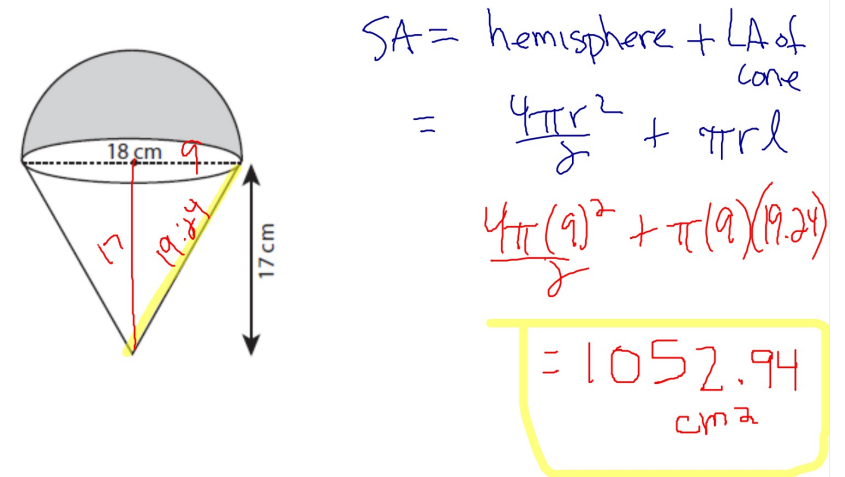


Below is a silo used to store grain on a farm. It needs to be painted. Find the number of square feet that need to be painted. Round to the nearest whole number.



Find the Volume and Surface Area to the nearest hundredth.

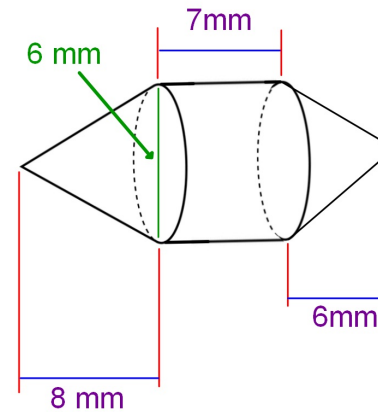


V of hemisphere + Vol of cone

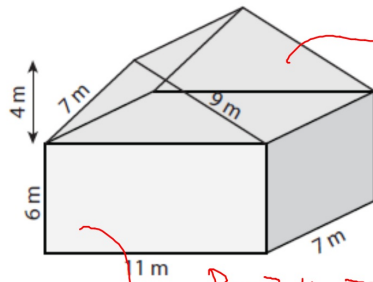
$$\frac{\frac{4}{3}\pi(9)^3}{2} + \frac{1}{3}\pi(9)^2(17)$$

 2968.80 cm^3

Find the volume of this solid. Round answer to the nearest tenth.



Find the Volume and Surface Area.



$$V = B \cdot h$$

$$\frac{1}{2}(4)(7)(7)$$

$$154$$

$$462 \text{ m}^3$$

$$B = 7 \cdot 1 = 7$$

$$V = (7)(6)$$

$$V = 42$$