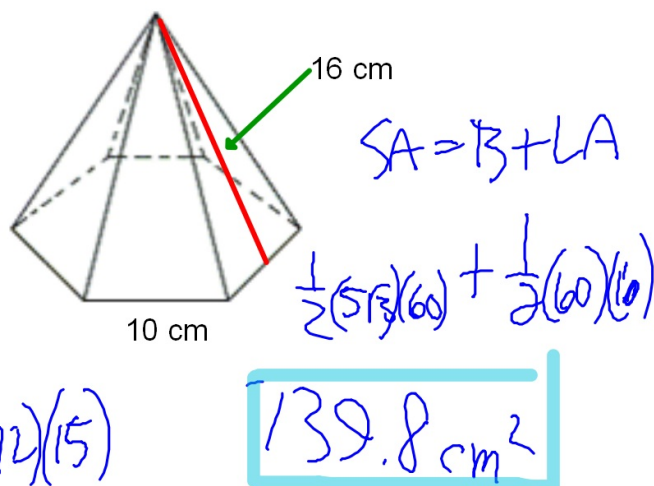
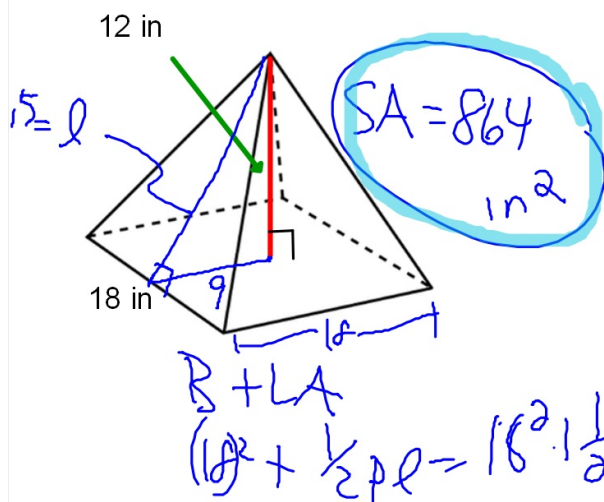


# Bellwork, Tuesday, May 27, 2014

Find the surface area to the nearest tenth.

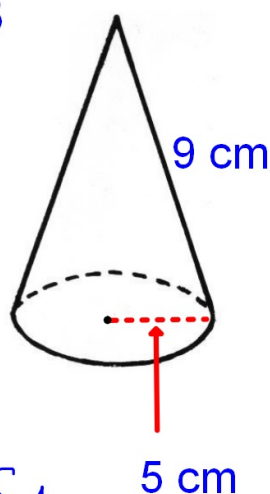
1. Square Pyramid.

2. Hexagonal Pyramid.



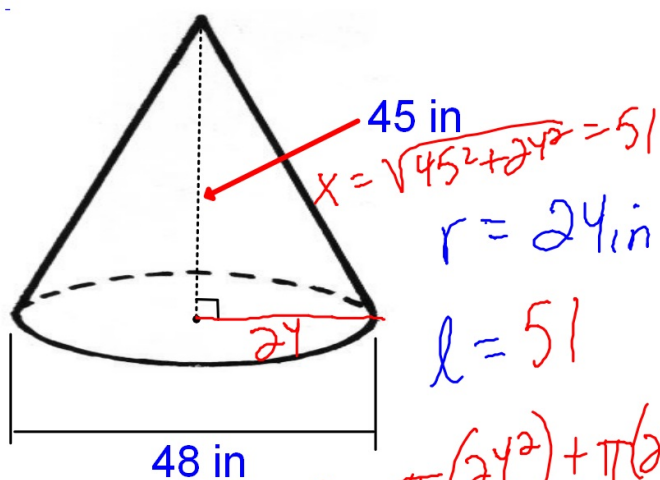
Find the surface area of each cone. Give your answer in terms of  $\pi$ .

3.



$$SA = \pi(5)^2 + \pi(5)(9) = 70\pi \text{ cm}^2$$

4.



$$SA = \pi(24^2) + \pi(24)(51) = 1800\pi \text{ in}^2$$