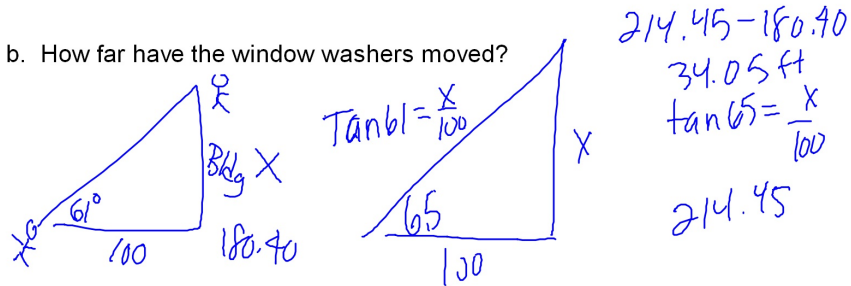


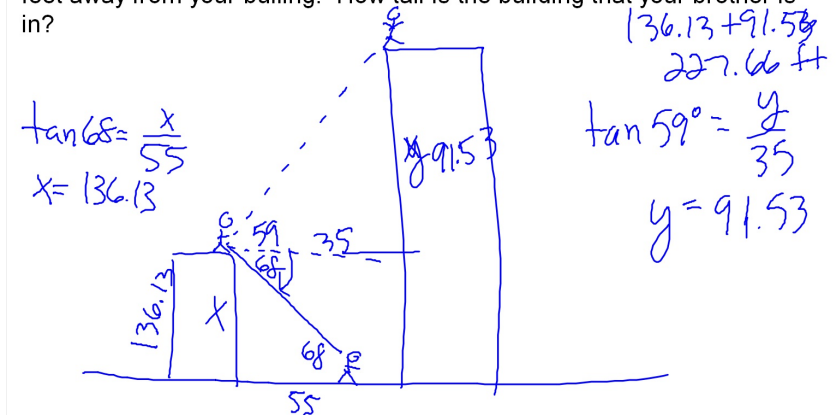
You walk 100 feet away from the entrance of a skyscraper turn around and look up at an angle of elevation of  $61^\circ$  and see some window washers at work. You stop to talk on your cell phone. When your conversation is done you look up at an angle of elevation of  $65^\circ$  to see the same window washers.

a. Have the window washers moved up or down the side of the building?

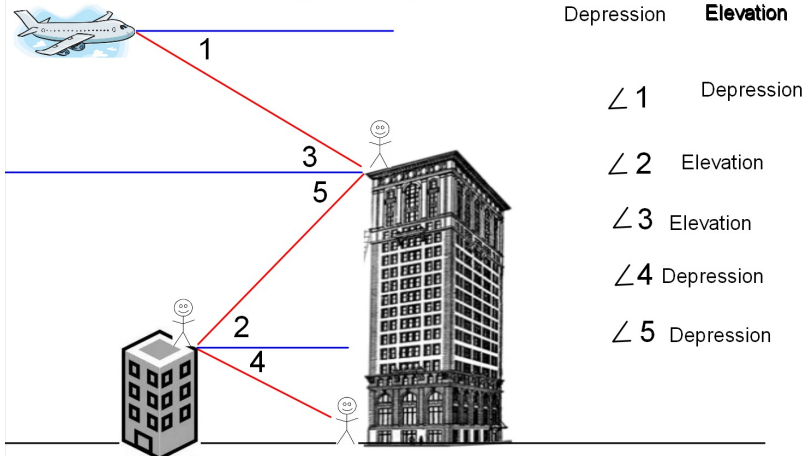
b. How far have the window washers moved?



You are on the roof of a tall building and see your Mom on the ground with an angle of depression of  $68^\circ$ . Your Mom is 55 feet from your building. At the same time you look up at an angle of elevation of  $59^\circ$  and see your brother on the roof of the building across the street, which is 35 feet away from your building. How tall is the building that your brother is in?



Describe each angle in the diagram as either an angle of elevation or an angle of depression.



Hwk #13

Sec 8-5

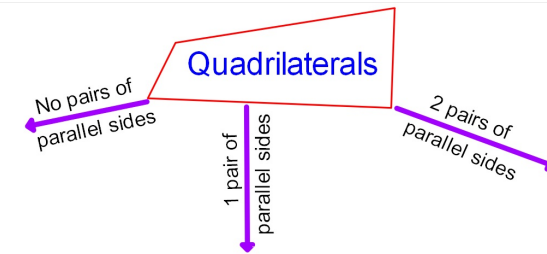
Pages 447-449

Problems 1-4, 11, 14, 15, 17, 28, 29

Due Monday

## Sec 6-1 Classifying Quadrilaterals

Quadrilateral: A polygon with four sides.



What are some name of Quadrilaterals that you know:

parallelogram  
Rhombus  
Trapezoid → Isosceles trap  
Square  
Rectangle  
Kite

