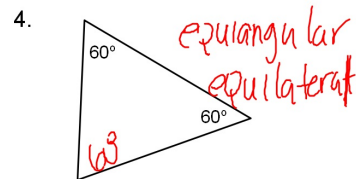
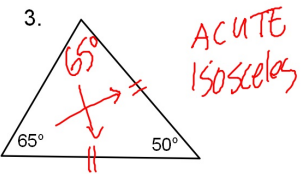
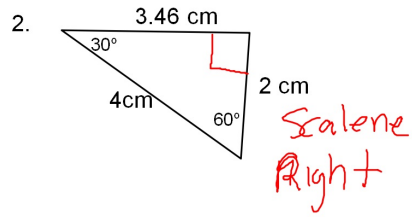
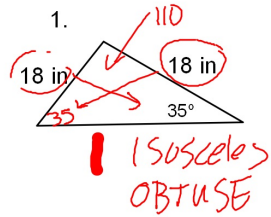
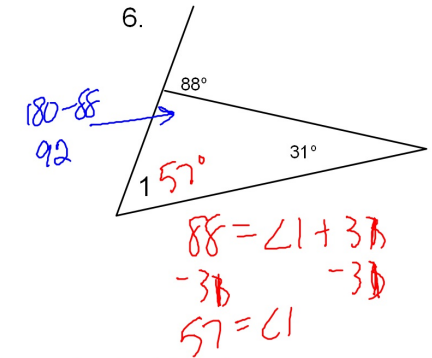
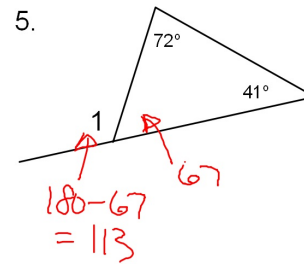


Name each triangle by its sides and its angles.



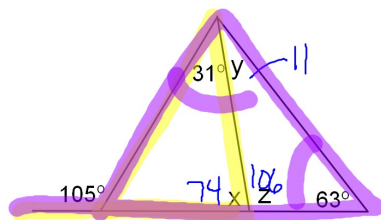
Find the measure of angle 1 in each diagram.



The measure of an exterior angle of a triangle is equal to the sum of the remote interior angles.



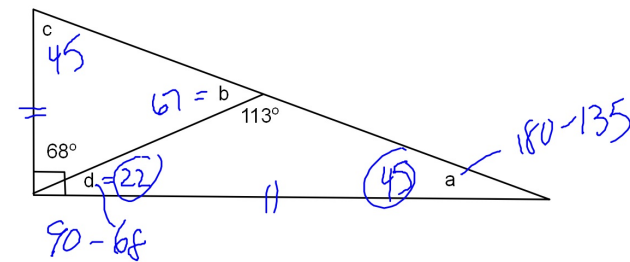
7. Find the value of x, y and z.



$$105 = 63 + 31 + y$$

$$105 = 31 + x$$

8. Find the value of each variable.



$$90 - 68 = 22$$

$$180 - 135 = 45$$