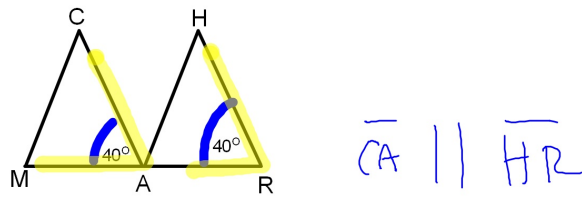
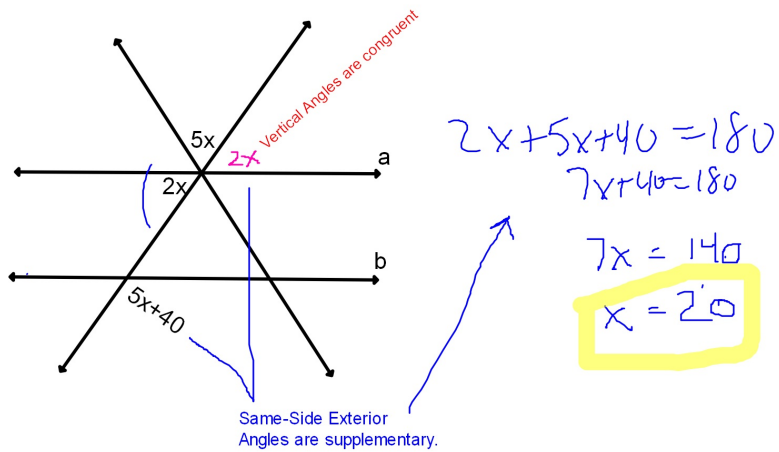


Which segments are parallel?



These are congruent corresponding angles

Find the value for x that makes lines a and b parallel.



Given: $a \parallel b$ and $\angle 1 \cong \angle 4$

Prove: $b \parallel c$

Statement	Reason
$a \parallel b, \angle 1 \cong \angle 4$	Given
$\angle 1 \cong \angle 3$	Alt int \angle s
$\angle 3 \cong \angle 4$	Subst.
$b \parallel c$	b/c corr \angle s \cong

