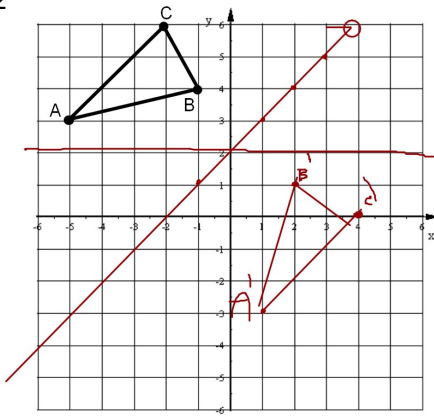
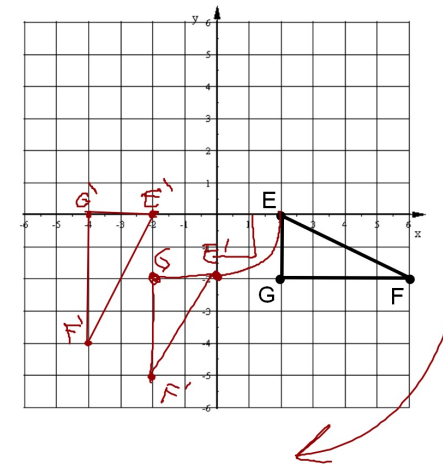


Geometry Bellwork Wednesday, Oct 2, 2013

1. Plot and label the image of triangle ABC after reflecting over the line $y = x + 2$



2. Rotate triangle EFG 90° CW about the origin. Label the points on the image.



3. Describe the rotation of triangle JKL by giving the direction and distance. The center of rotation is pt Q

