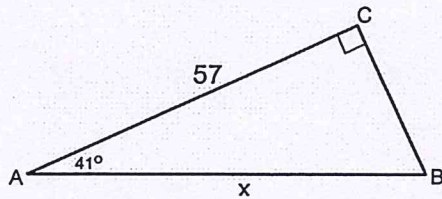


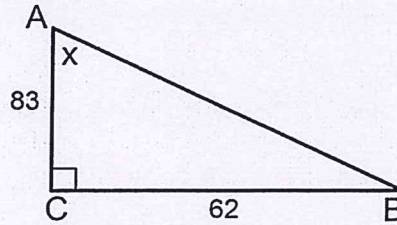
Bellwork Alg 2 Monday, April 8, 2019

1. Find the value of x in each triangle to the nearest hundredth.

a.



b.



2. $\theta = \frac{117\pi}{13}$

a. Find a coterminal angle between 0 and 2π . Give your answer in radians as a fraction, in terms of π , and in reduced form.

b. Tell in which quadrant or on which axis the terminal side lies.

In an Italian class, 65 percent of the students were women. At the end of the class, 52 percent of the men and 44 percent of the women received a certificate.

3. What percentage of the class received a certificate?

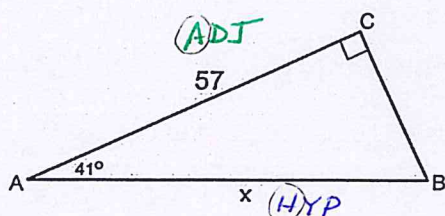
4. What percentage of those who received a certificate were men?

Bellwork Alg 2 Monday, April 8, 2019

ANSWERS

1. Find the value of x in each triangle to the nearest hundredth.

a.

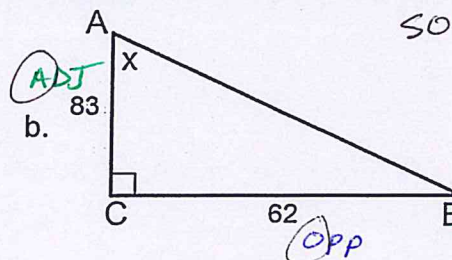


SOHCAHTOA

$$\cos 41^\circ = \frac{57}{x}$$

$$x = 75.53$$

b.



SOHCAHTOA

$$\tan x = \frac{62}{83}$$

$$\angle x = \tan^{-1}\left(\frac{62}{83}\right)$$

$$x = 36.76^\circ$$

2. $\theta = \frac{117\pi}{13}$

a. Find a coterminal angle between 0 and 2π . Give your answer in radians as a fraction, in terms of π , and in reduced form.

$$\frac{117\pi}{13} = 9\pi - 2\pi \cdot 4 = \pi$$

b. Tell in which quadrant or on which axis the terminal side lies.

NEG x-axis

In an Italian class, 65 percent of the students were women. At the end of the class, 52 percent of the men and 44 percent of the women received a certificate.

3. What percentage of the class received a certificate?

	ENTIRE CLASS	Received Certificate	
women	65%	44%	$.44(65) = 28.6$
men	35%	52%	$.52(35) = 18.2$
			<u>46.8%</u>

4. What percentage of those who received a certificate were men?

46.8% of class received a certificate 18.2% was a man

$$\frac{18.2}{46.8} \times 100 = 38.9\% \text{ of certificate earners were men}$$