

Algebra 2 Hwk #7 Sec 2-5 Name:

Describe all the transformation of $y = |x|$ each equation represents.

1. $y = -3|x + 1| - 7$

2. $y = 6|x - 8| + 2$

Write the equation of each transformation of $y = |x|$

3. Translated 16 units left, 7 units up, twice as tall, opens down.

EQ:

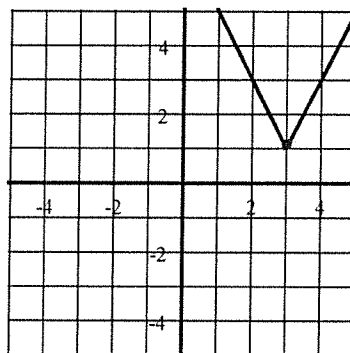
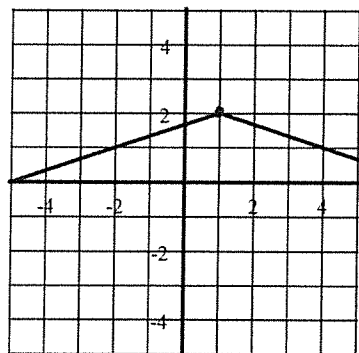
4. Translated 8 units down, one-third as tall, and opens up.

EQ:

Write the equation of each absolute value function.

5. EQ

6. EQ



Graph each absolute value function using at least five points.

7. $y = -3|x - 2| + 5$

8. $y = \frac{1}{2}|x + 1| - 3$

