

Hon Alg 2 Bellwork Tuesday, June 6, 2017

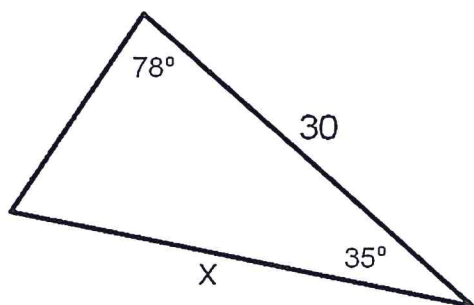
1. Find all angles, $0^\circ \leq \theta \leq 360^\circ$ that meet each condition.

a) $\cos \theta = \frac{\sqrt{2}}{2}$

b) $\sin \theta = \frac{1}{2}$

2. Find the value of x to the nearest tenth.

$x =$

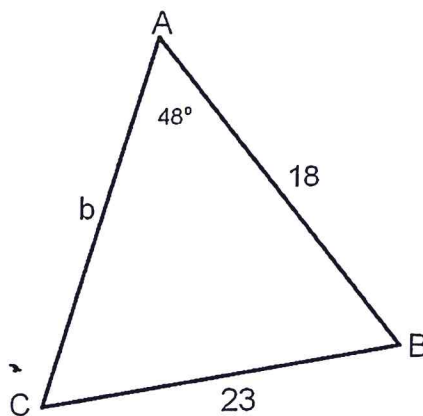


3. Find the missing measures to the nearest tenth.

$b =$

$m\angle B =$

$m\angle C =$



Hon Alg 2 Bellwork Tuesday, June 6, 2017

1. Find all angles, $0^\circ \leq \theta \leq 360^\circ$ that meet each condition.

a) $\cos \theta = \frac{\sqrt{2}}{2}$

b) $\sin \theta = \frac{1}{2}$

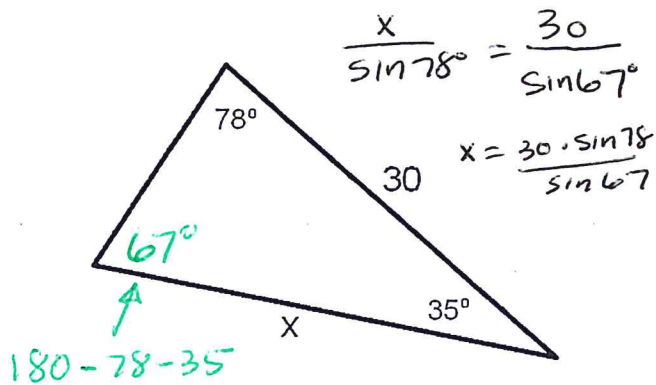
$\theta = 45^\circ, 315^\circ$

$\theta = 30^\circ, 150^\circ$

Answers

2. Find the value of x to the nearest tenth.

$x = 31.9$

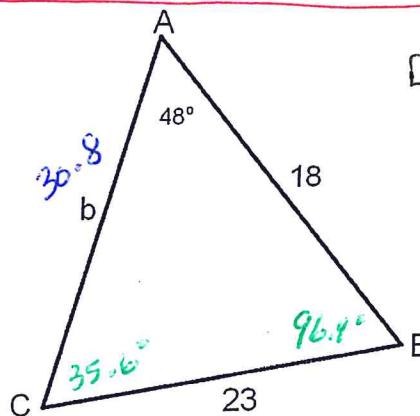


3. Find the missing measures to the nearest tenth.

$b = 30.8$

$m\angle B = 96.4^\circ$

$m\angle C = 35.6^\circ$



1st

$\frac{\sin 48^\circ}{23} = \frac{\sin C}{18}$

$\angle C = \sin^{-1}\left(\frac{18 \cdot \sin 48^\circ}{23}\right)$

$\angle C = 35.6^\circ$

2nd

$\angle B = 180 - 48 - 35.6$

$\angle B = 96.4^\circ$

3rd

$\frac{23}{\sin 48^\circ} = \frac{b}{\sin 96.4^\circ}$