

Find all real solutions to each polynomial equation by graphing.

1. $x^3 - 7x = 6 - 4x^2$

2. $x^4 - x^3 - 12x^2 - 4x + 16.1 = 0$

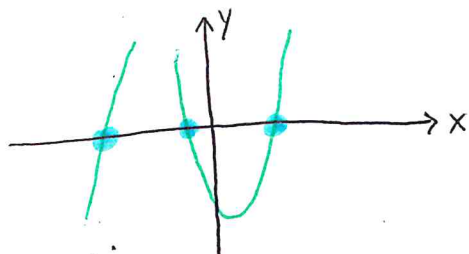
Answers

Find all real solutions to each polynomial equation by graphing.

1. $x^3 - 7x = 6 - 4x^2$

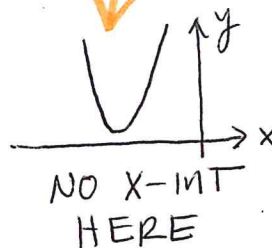
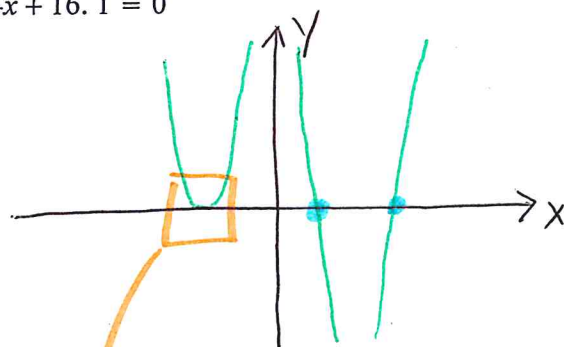
2. $x^4 - x^3 - 12x^2 - 4x + 16.1 = 0$

$x^3 + 4x^2 - 7x - 6 = 0$



Solutions

$x = -5.14, -0.65, 1.79$



only 2
Real Sol's

$x = 1.00, 4.00$