

Bellwork Alg 2A Wednesday, November 2, 2016

For the set of data in problems 1 and 2 do the following.

- Make a scatter plot for each set of data.
- Find the regression equation for each and write it down.
- Sketch the scatter plot with the regression equation.
- Then, answer the following question and give a reason.

Which regression equation is a better fit for its set of data?

1.

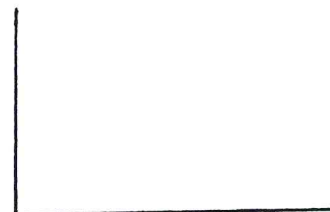
X	Y
-6	111
4	8
13	-270
42	-624
57	-938



EQ:

2.

X	Y
-21	-358
-1	-43
15	280
39	803
73	1611



EQ:

3. Using your graphing calculator, graph this piecewise function in a Standard Window.

$$f(x) = \begin{cases} -x + 2 & \text{if } x \leq -5 \\ 2|x - 1| - 2 & \text{if } -5 < x < 3 \\ -2x + 4 & \text{if } x \geq 3 \end{cases}$$

Bellwork Alg 2A Wednesday, November 2, 2016

Answers

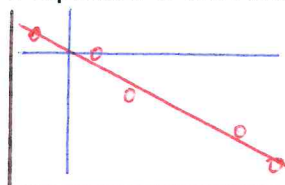
For the set of data in problems 1 and 2 do the following.

- Make a scatter plot for each set of data.
- Find the regression equation for each and write it down.
- Sketch the scatter plot with the regression equation.
- Then, answer the following question and give a reason.

Which regression equation is a better fit for its set of data?

1.

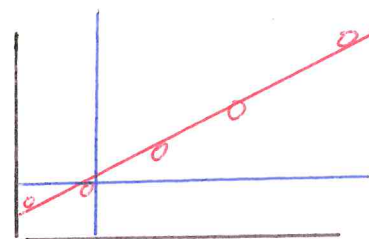
X	Y
-6	111
4	8
13	-270
42	-624
57	-938



EQ: $y = -16.39x + 18.06$

2.

X	Y
-21	-358
-1	-43
15	280
39	803
73	1611



EQ: $y = 21.18x + 13.74$

3. Using your graphing calculator, graph this piecewise function in a Standard Window.

$$f(x) = \begin{cases} -x + 2 & \text{if } x \leq -5 \\ 2|x - 1| - 2 & \text{if } -5 < x < 3 \\ -2x + 4 & \text{if } x \geq 3 \end{cases}$$