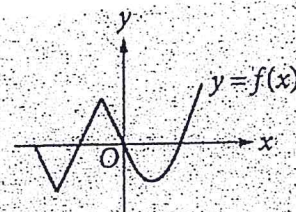
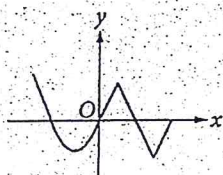


1.

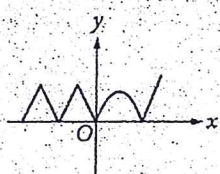
The graph of $y = f(x)$ is shown in the xy -plane. If $g(x) = |f(x)|$, which of the following graphs best represents the graph of $y = g(x)$?



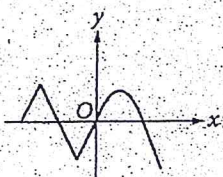
A)



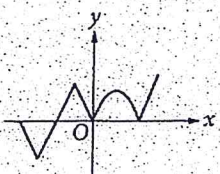
C)



B)



D)



4. A bakery uses a special flour mixture that contains corn, wheat, and rye in the ratio of 3:5:2. If a bag of the mixture contains 5 pounds of rye, how many pounds of wheat does it contain?

- (A) 2
(B) 5
(C) 7.5
(D) 10
(E) 12.5

8. If c is positive, what percent of $3c$ is 9?

- (A) $\frac{c}{100}\%$ (B) $\frac{c}{3}\%$ (C) $\frac{9}{c}\%$ (D) 3% (E) $\frac{300}{c}\%$

16

If a and b are positive numbers such that $2b = 3a$, what is the value of $\frac{a+b}{b}$?

Hon Alg 2 Bellwork Answers

Fri 10-7-16

① C

④ E

⑧ E

⑩ $1\frac{2}{3}$ or $\frac{5}{3}$