

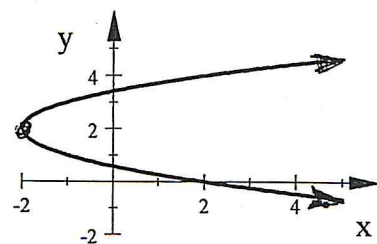
State if each of the below relations is a function or not.

1. $(2,6), (-7,8), (4,3), (5,8), (6,2)$

2.

X	Y
4	7
9	1
2	5
-3	-8
4	6

3.



State the domain and range for the relations in the given problem.

4. Use Problem #1:

Domain:Range:

5. Use problem #3:

Domain:Range:

Find the slope of the line that passes through each pair of points. Reduce if possible.

6. $(6,-3)$ & $(-9,-13)$

Slope =

7. $(4,-1)$ & $(-8,-1)$

Slope =

8. $(-5,11)$ & $(-5,2)$

Slope =

9. Point-Slope Form: $y - y_1 = m(x - x_1)$

Find the slope and use the above formula to write the equation of the line that passes through the given points.

$(7,4)$ & $(11,-2)$

EQ :

10. Slope-Intercept Form: $y = mx + b$

Find the slope and use the above formula to write the equation of the line that passes through the given points.

$(12,9)$ & $(-8,-6)$

EQ :