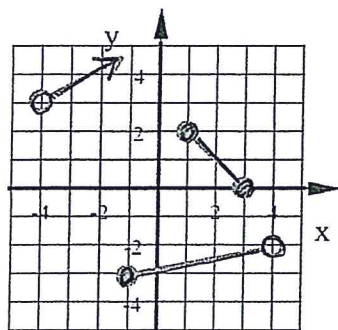


Bellwork Alg 2A Monday, October 3, 2016

1. State the Domain and Range of the graph below.



Domain:

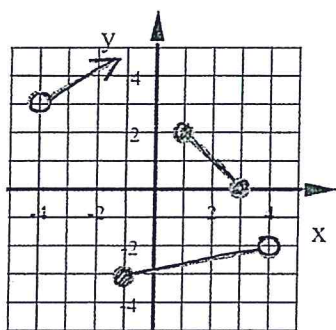
Range:

- State all the values of x that are more than 20 units away from zero on a number line.
- State all the values of x that are less than 8 units from zero on a number line.
- State all the values of x that are exactly 11 units from zero on a number line.
- Solve this equation. $|x - 3| + 8 = 20$

Bellwork Alg 2A Monday, October 3, 2016

Answers

1. State the Domain and Range of the graph below.



Domain: $x > -4$

Range: $-3 \leq y < -2$, $0 \leq y \leq 2$, $y > 3$

2. State all the values of x that are more than 20 units away from zero on a number line.

$$x < -20 \text{ or } x > 20$$

3. State all the values of x that are less than 8 units from zero on a number line.

$$-8 < x < 8$$

4. State all the values of x that are exactly 11 units from zero on a number line.

$$x = -11, x = 11$$

5. Solve this equation. $|x - 3| + 8 = 20$

$$|x - 3| = 12$$

$$x - 3 = -12$$

$$+3 \quad +3$$

$$x - 3 = 12$$

$$+3 \quad +3$$

$$x = -9, 15$$