

Work on this after you have finished Quiz #1.

1. Given $f(x) = x^2 - 3x$

a) Find $f(-3)$

b) Find $f(5W)$

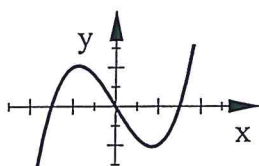
c) Find $f(c + 2)$

2. Tell if each of the following is a Function or Not a Function.

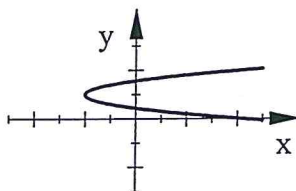
a) $(4,3), (3,-9), (6,1), (-6,3)$

b) $(-5,-2), (11,-1), (-5,6), (8,4)$

c)



d)



3. Given the equation of a line in Standard Form, find the x-intercept and the y-intercept.

EQ: $10x - 6y = 30$

x-int=

y-int=

4. Write the equation of the line that passes through the two given points.

Give your answer in Point-Slope Form: $y - y_1 = m(x - x_1)$

$(5,6) \& (-1,8)$

EQ :

5. Write the equation of the line that passes through the two given points.

Give your answer in Slope-Intercept Form: $y = mx + b$

$(4,5) \& (-6,10)$

EQ :

6. Write the equation of the line that passes through these two points: $(4,3) \& (-6,3)$

7. Write the equation of the line that passes through these two points: $(5,-8) \& (5,-1)$