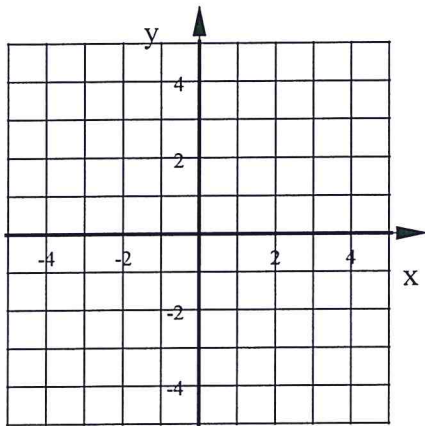


Hon Alg 2 Bellwork Tuesday, September 20, 2016

1. Graph these two equations together.

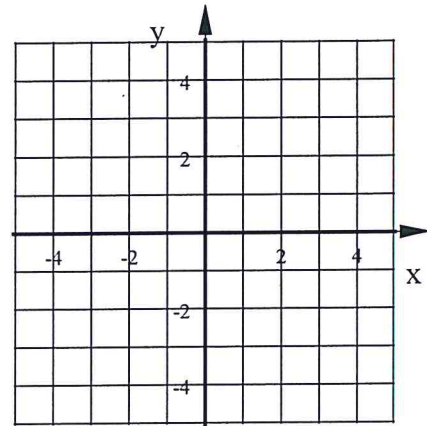
$$y = 2|x - 1| - 5 \quad \& \quad y = -1$$



Use this graph to state the interval(s) for which $2|x - 1| - 5 > -1$

2. Graph these two equations together.

$$y = 3|x + 2| - 4 \quad \& \quad y = 2$$



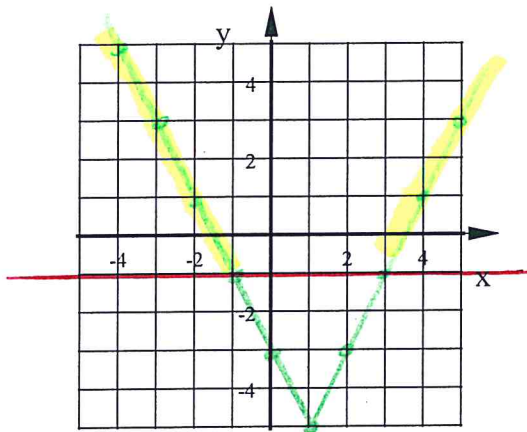
Use this graph to state the interval(s) for which $3|x + 2| - 4 \leq 2$

Hon Alg 2 Bellwork Tuesday, September 20, 2016

ANSWERS

1. Graph these two equations together.

$$y = 2|x - 1| - 5 \quad \& \quad y = -1$$

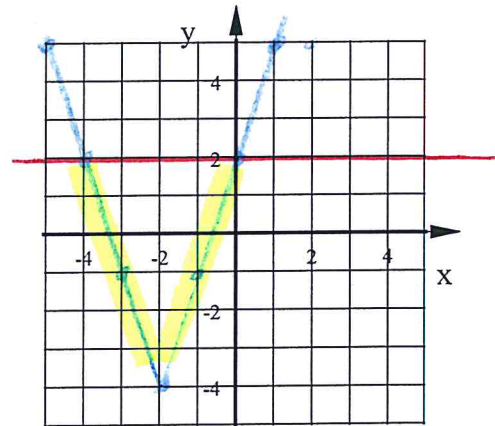


Use this graph to state the interval(s) for which $2|x - 1| - 5 > -1$

$$x < -1, x > 3$$

2. Graph these two equations together.

$$y = 3|x + 2| - 4 \quad \& \quad y = 2$$



Use this graph to state the interval(s) for which $3|x + 2| - 4 \leq 2$

$$-4 \leq x \leq 0$$