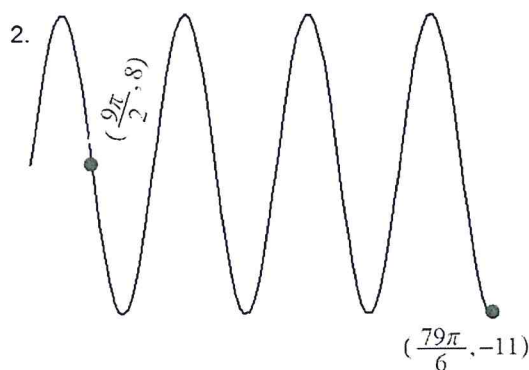
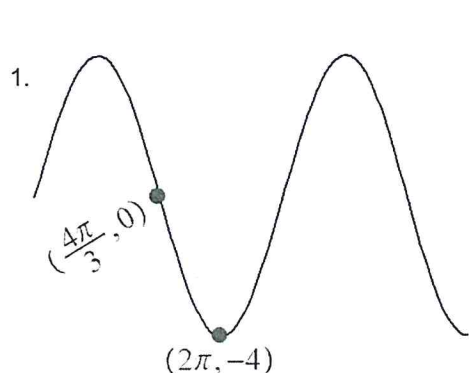
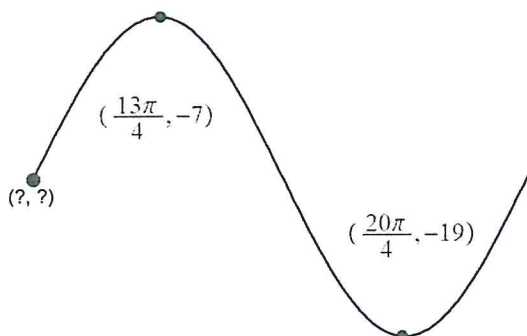


# Alg 2 Bellwork Tuesday, May 17, 2016

Find the Period, Amplitude, and equation of the Midline for each.



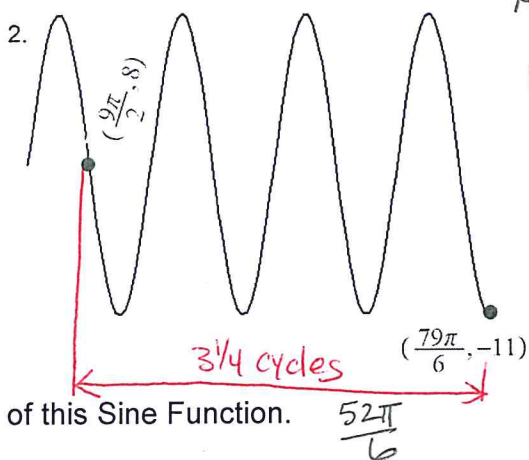
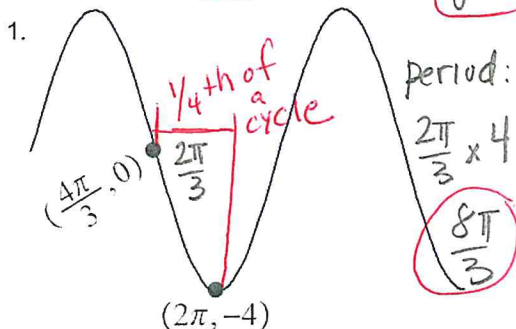
3. Find the coordinates of the "starting point" of this Sine Function.



## Alg 2 Bellwork Tuesday, May 17, 2016

Find the Period, Amplitude, and equation of the Midline for each.

Amplitude = 4 Midline:  $y = 0$

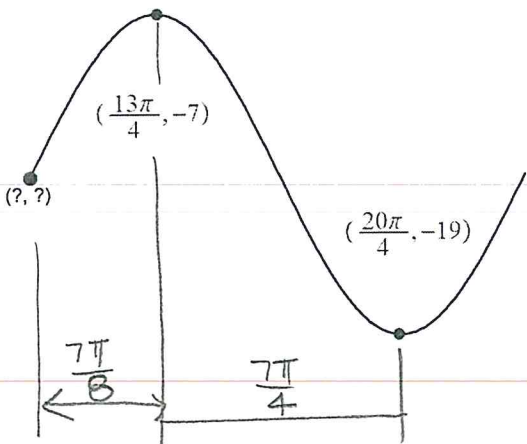


Amplitude = 19

Midline:  $y = 8$

period =  $\frac{52\pi}{6} = \frac{8\pi}{3}$

3. Find the coordinates of the "starting point" of this Sine Function.



$$x\text{-coord} \quad \frac{13\pi}{4} - \frac{7\pi}{8} = \frac{26\pi}{8} - \frac{7\pi}{8} = \frac{19\pi}{8}$$

$$y\text{-coord} \quad \frac{-7 + -19}{2} = -13$$

$$\left(\frac{19\pi}{8}, -13\right)$$