

Use a textbook if needed to complete this practice sheet over sections 2-1 and 2-2. Work on this after you have finished Quiz #1.

1. Given  $f(x) = 2x^2 - 3x$

a) Find  $f(3)$

b) Find  $f(-3)$

c) Find  $f(Q)$

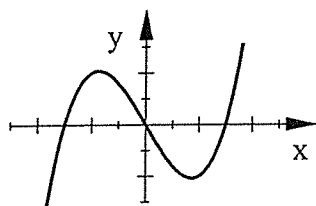
d) Find  $f(5W)$

2. Tell if each of the following is a Function or Not a Function.

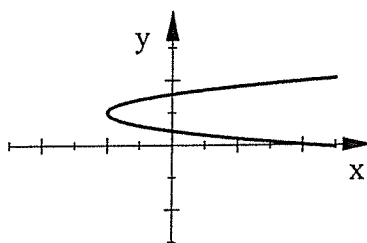
a)  $(4,3), (3,-9), (6,1), (-6,3)$

b)  $(-5,-2), (11,-1), (-5,6), (8,4)$

c)



d)



3. Given the equation of a line in Standard Form, find the x-intercept and the y-intercept.

EQ:  $10x - 6y = 30$

x-int=

y-int=

4. Write the equation of the line that passes through the two given points. Give your answer in Point-Slope Form.

$(5,6) \& (-1,8)$        $q$       EQ :

5. Write the equation of the line that passes through the two given points. Give your answer in Slope-Intercept Form.

$(4,5) \& (-6,10)$        $q$       EQ :