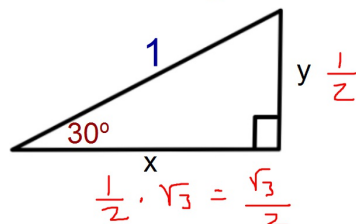


## Find the exact length of each leg

SOHCAHTOA



$$\frac{1}{2} \cdot \sqrt{3} = \frac{\sqrt{3}}{2}$$

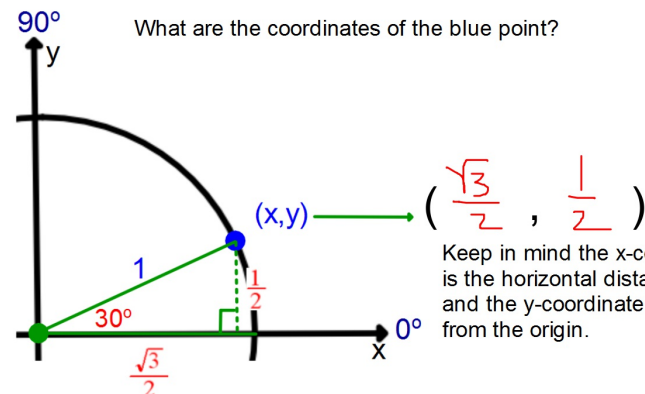
Use this triangle to find the exact value of each:

$$\cos 30^\circ = \frac{\frac{\sqrt{3}}{2}}{1} = \frac{\sqrt{3}}{2}$$

$$\sin 30^\circ = \frac{\frac{1}{2}}{1} = \frac{1}{2}$$

$$\tan 30^\circ = \frac{\frac{1}{2}}{\frac{\sqrt{3}}{2}} = \frac{1}{\sqrt{3}} \cdot \frac{\sqrt{3}}{\sqrt{3}} = \frac{\sqrt{3}}{3}$$

Using the triangle from the previous problem answer the following:



From the 30-60-90 right triangle we found the following:

$$\cos 30^\circ = \frac{\sqrt{3}}{2} \quad \sin 30^\circ = \frac{1}{2}$$

From the unit circle we found the coordinates of the point on the Unit Circle at  $30^\circ$  is:

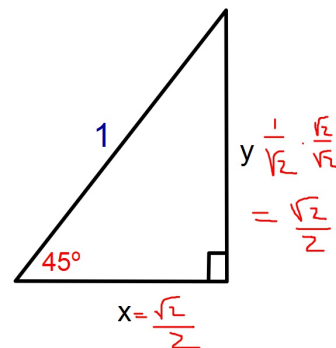
$$(\frac{\sqrt{3}}{2}, \frac{1}{2})$$

Coordinates on the Unit Circle:

$$(x, y) \longrightarrow (\cos \theta, \sin \theta)$$

This means that the x and y coordinates for points on the Unit Circle are related to the Sin and Cos of angles from 30-60-90 and 45-45-90 triangles.

## Find the exact length of each leg



Use this triangle to find the exact value of each:

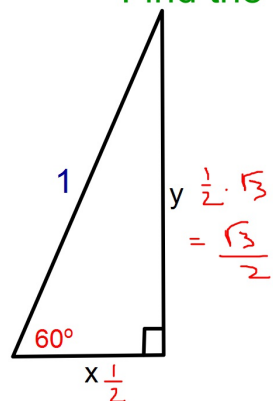
$$\cos 45^\circ = \frac{\frac{\sqrt{2}}{2}}{1} = \frac{\sqrt{2}}{2}$$

$$\sin 45^\circ = \frac{\frac{\sqrt{2}}{2}}{1} = \frac{\sqrt{2}}{2}$$

Same as  $\cos 45^\circ$

$$\tan 45^\circ = \frac{\frac{\sqrt{2}}{2}}{\frac{\sqrt{2}}{2}} = 1$$

## Find the exact length of each leg



Use this triangle to find the exact value of each:

$$\cos 60^\circ = \frac{1}{2}$$

$$\sin 60^\circ = \frac{\sqrt{3}}{2}$$

$$\tan 60^\circ = \frac{\sqrt{3}}{\frac{1}{2}} = \sqrt{3}$$

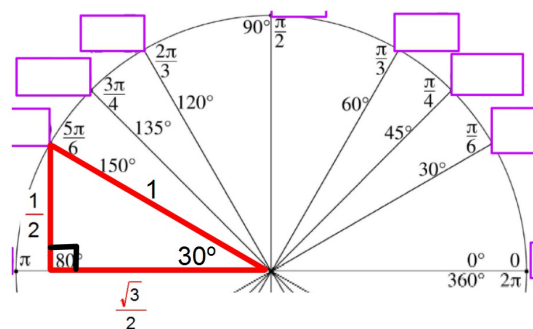
## Coordinates of the points on the Unit Circle:

For the coordinates of the points on the x and y axes all you need to know is that the radius of the circle is 1.

You can use the relationships in the special right triangles to fill out the other coordinates of the points on the Unit Circle  $(x, y) \rightarrow (\cos \theta, \sin \theta)$

Just create a triangle by drawing a vertical line from the point on the Unit Circle to the x-axis to create a right triangle. See the following example.

To find the coordinates of the point at  $150^\circ$  draw a line down to the x-axis to create a 30-60-90 triangle.



Since the x-coordinate is the horizontal distance from the origin and the y-coordinate is the vertical distance from the origin and given the point is in the second quadrant the coordinates of the point on the Unit Circle for  $150^\circ$  is:

$$\left(-\frac{\sqrt{3}}{2}, \frac{1}{2}\right)$$

Use this idea to fill out the remaining coordinates of the points on the Unit Circle.

After you have filled out the entire Unit Circle look it over and see if you can find some patterns in the Unit Circle that will help you fill it out in the future.

You will have a quiz over just the Unit Circle next week some time.