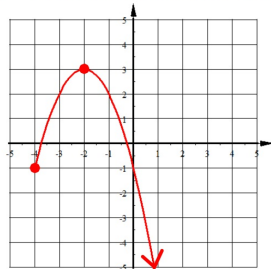


1. State the Domain and Range using inequalities.



Domain: $x \geq -4$

Range: $y \leq 3$

2. Use these two functions: $h(x) = x^2 - 6x$ $g(x) = 2x - 5$

Find $h(g(6))$

$$g(6) = 2(6) - 5 = 7$$

$$h(g(6))$$

$$h(7) = (7)^2 - 6(7) = 7$$

3. Two people get in their boats and leave the same spot at the same time traveling in opposite directions. The person sailing East sails 4 mph faster than the person sailing West. After five hours they 140 miles apart. Write and solve a system of equations to find out how fast each boat was sailing.

	16mph EAST	12mph WEST
d	$5(x+4)$	$5x$
r	$x+4$	x
t	5	5

$\text{---} + \text{---} = 140$
 $5x + 20 + 5x = 140$
 $10x + 20 = 140$
 $x = 12 \text{ mph}$

4. Solve for Q. State restrictions on the variables.

$$H(M + PQ) - A = W + JQ$$

$$HM + HPQ - A = W + JQ$$

$$HPQ - JQ = W + A - HM$$

$$\frac{Q(HP - J)}{HP - J} = \frac{W + A - HM}{HP - J}$$

$$HP - J \neq 0$$