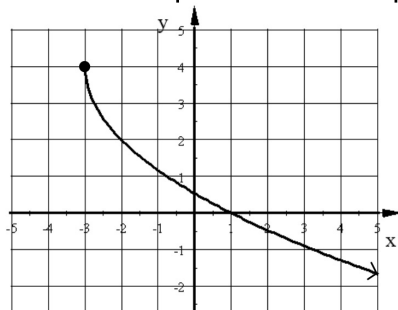


1. Write the equation of this square root function.



2. The population of a city in 1992 was 15,700. The population has been increasing 1.8% each year.

a) Find the population in 1985.

b) Find the population in 2010.

3. The half-life of a medicine is 20 minutes. You took a 300ml dose at 10:00 am.

How much remains in your system at 1:30 pm the same day.  
round to the nearest hundredth.

Solve each equation to the nearest hundredth.

4.  $5(6)^{x+3} - 7 = 29$

5.  $\log_5 X - \log_5(x - 4) = 3$

6. Write the equation of this periodic function.

