

1. Graph one period of the following function:

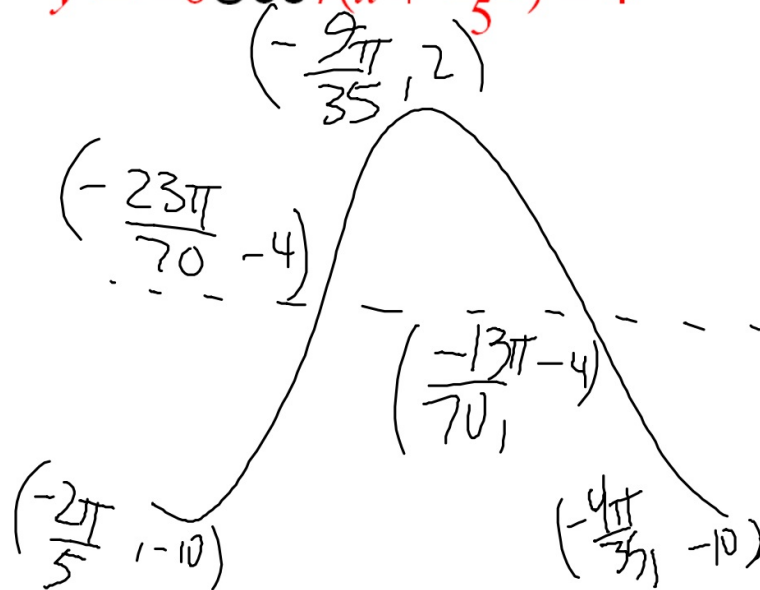
$$y = -6\cos 7\left(x + \frac{2\pi}{5}\right) - 4$$

Amp = 6

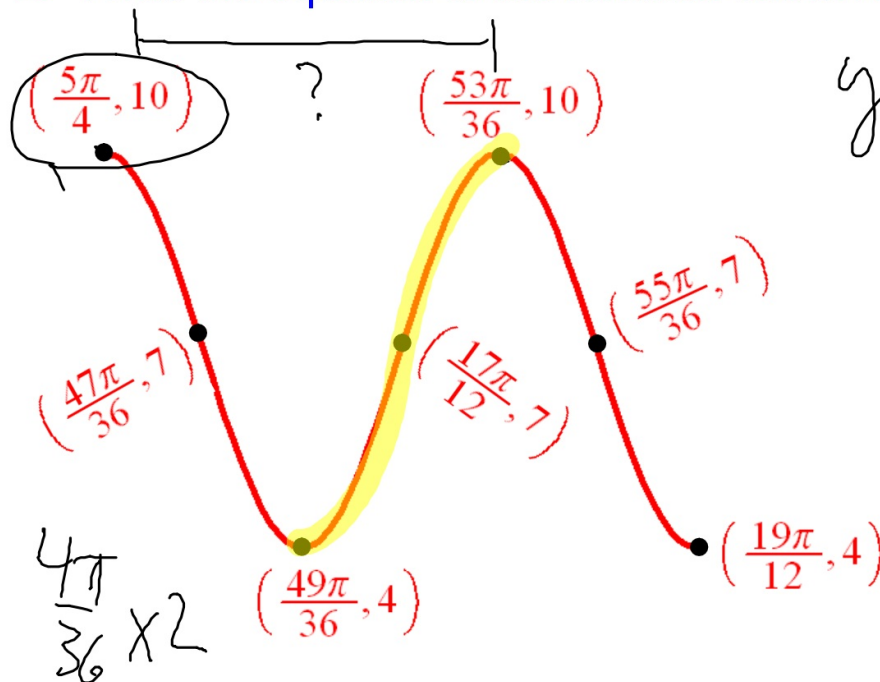
midline

$$y = -4$$

$$\text{period} = \frac{2\pi}{7}$$



2. Write the equation of the function shown below.



$$y = 3\cos 9\left(x - \frac{5\pi}{4}\right) + 7$$