

Bellwork Tuesday, February 25, 2014

1. Samantha has to choose an outfit for school. An outfit consists of a skirt, a shirt, and a pair of shoes. Samantha has the following to choose from: 6 skirts, 8 shirts, and 5 pairs of shoes. How many outfits can Samantha create?

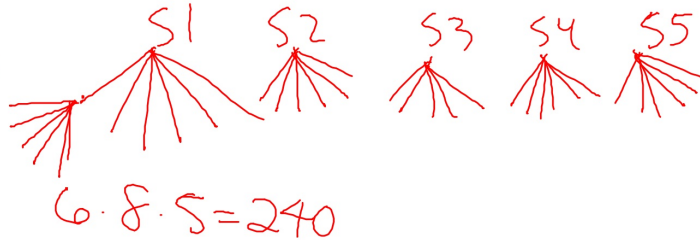
A. 19

B. 240

C. 70

D. 78

E. 88



2. Find the area of Rhombus ABCD.

Kite

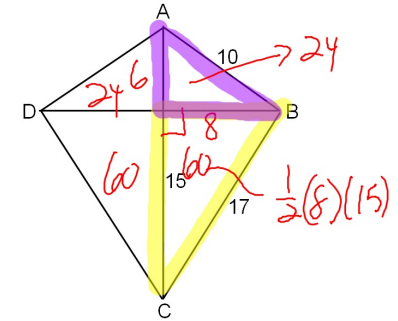
A. 168

B. 170

C. 85

D. 54

E. 2550



3. What is the angle created by the two hands of a clock when it is exactly 4:00?

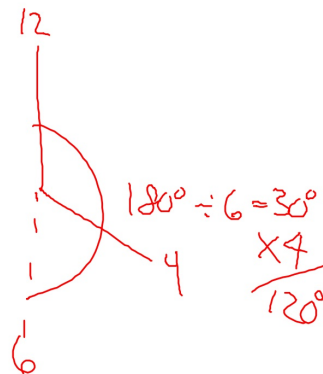
A. 160°

B. 120°

~~C. 80°~~

~~D. 30°~~

E. 150°



4. ABC is a right triangle. The longest side (b) is 18 inches long. If Angle A is 30° what is the measure of the side opposite Angle A to the nearest tenth?

A. 9 inches

B. 18 inches

C. 10.4 inches

D. 4.5 inches

E. 15.6 inches

