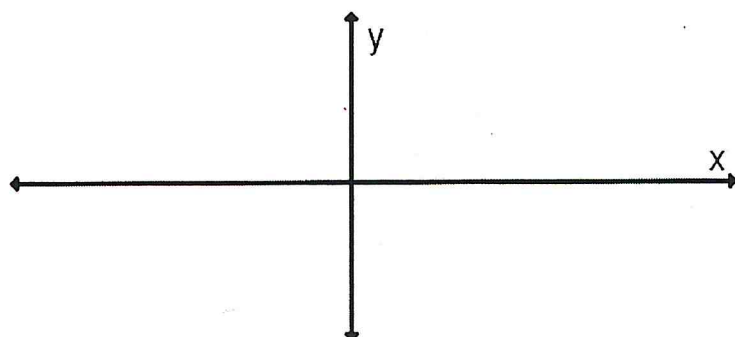
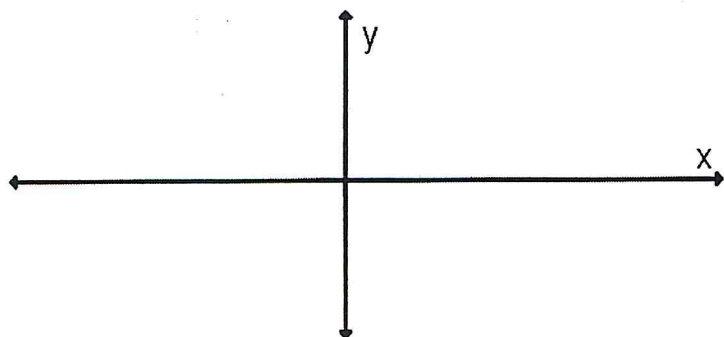


Then do the four problems below.

Sketch the graph of each polynomial showing the end behavior, the zeros, and the behavior around each zero.

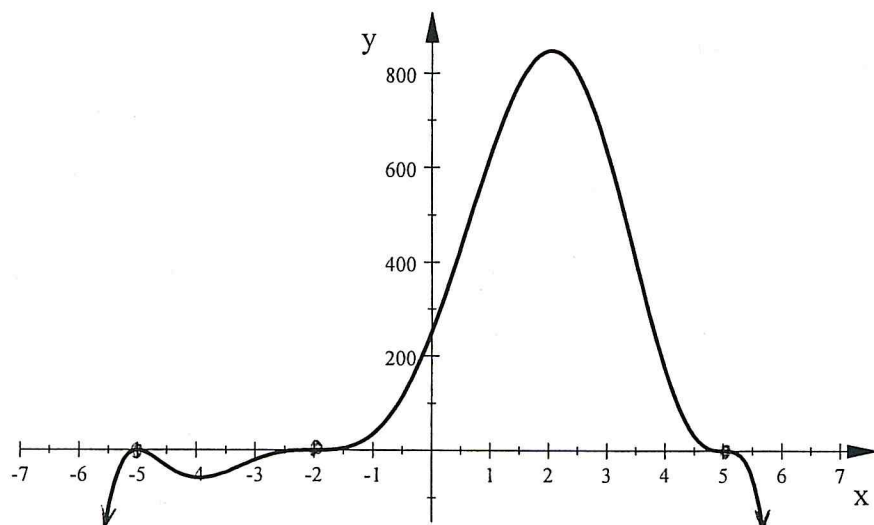
1.  $y = -x(x+6)^2(x-1)^2$

2.  $f(x) = (x-2)^2(x+4)^3(x+7)$



Use the graph of each polynomial to write its equation.

3.  $y =$



4.  $f(x) =$

