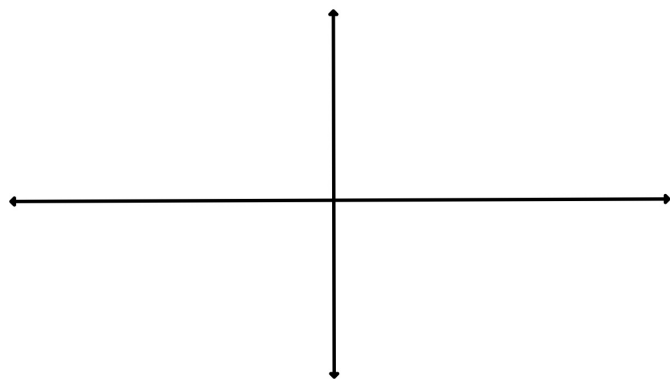


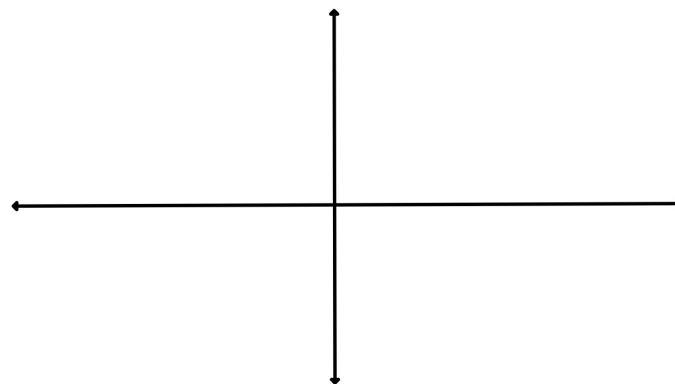
1. Sketch this function using the shapes of the zeros. Start in the second quadrant.

$$y = (x - 4)^3(x + 3)^2(x + 1)$$

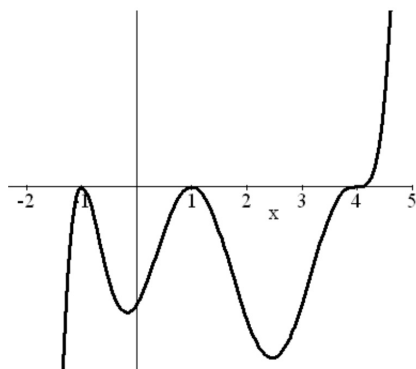


2. Sketch this function using the shapes of the zeros. Start in the third quadrant.

$$y = x^2(x + 6)^2(x - 7)^3(x + 3)^2$$



3. Write a possible equation for the function shown in this graph.



4. Write a possible equation for the function shown in this graph.

