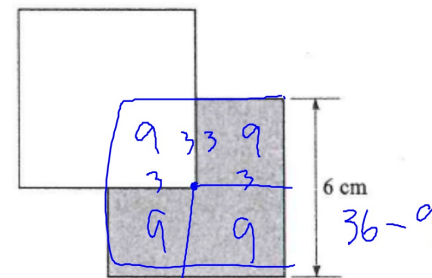


19. If the inequality $|x| > |y|$ is true, then which of the following must be true?

A. ~~$x > 0$~~
 B. ~~$x < y$~~
 C. ~~$x = y$~~
 D. $x \neq y$
 E. ~~$x > y$~~

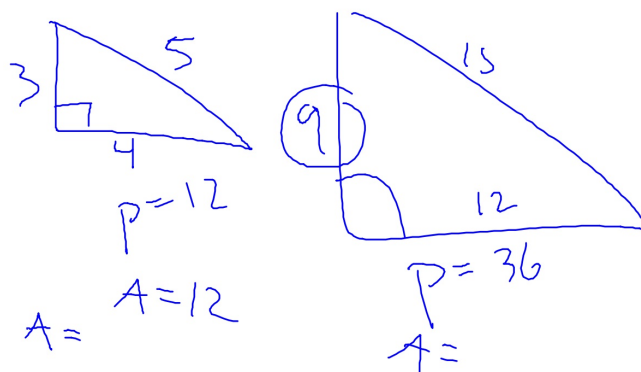
22. The two squares below have the same dimensions. The vertex of one square is at the center of the other square. What is the area of the shaded region, in square centimeters?



A. 9
 B. 12 ✓
 C. 27
 D. ~~36~~
 E. ~~72~~

23. The lengths of the sides of a triangle are 3, 4, and 5 inches. What is the length, in inches, of the shortest side of a similar triangle that has a perimeter of 36 inches?

A. 6
 B. 9 ✓
 C. 12
 D. 15
 E. 18



25. The total daily profit, p , in dollars, from producing and selling x units, is given by the function $p(x) = 17x - (10x + c)$, where c is a constant. If 300 units were produced and sold last week for a profit of \$1,900, then $c = ?$

A. 200
 B. 100
 C. 0
 D. -100
 E. -200

$$1900 = 17(300) - (10(300) + c)$$

$$= 5100 - 3000 - c$$

$$2100 - 200 = -c$$