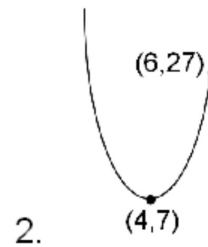
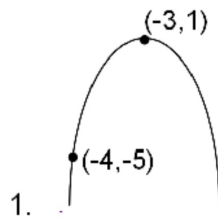


Write the equation of each parabola in Vertex Form.



3. State the equation for the line of symmetry, the coordinates of the vertex, and the y-intercept for this parabola:

$$y = -3(x + 4)^2 - 10$$

LOS:

Vertex:

y-int:

4. Graph this parabola with five points. $y = 3(x + 4)^2 - 5$

