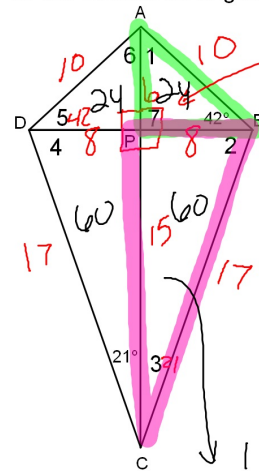


## Take a bellwork sheet

Hwk #2 is due tomorrow.

Hwk #3 will be due on Tuesday, Sept. 17  
(you'll need a sheet of graph paper)

1. Quadrilateral ABCD is a kite. Find the measure of all the numbered angles.



$$\frac{1}{2}(6)(8) = 24$$

$$\begin{aligned} 1 &= 48 \\ 2 &= 69 \\ 3 &= 21 \\ 4 &= 69 \\ 5 &= 42 \\ 6 &= 48 \end{aligned}$$

$$\frac{1}{2}(8)(15) = 60$$

2. If  $AP = 6$ ,  $AB = 10$  and  $BC = 17$  find the length of the two diagonals and the area of the kite.

$$DB = 16 \quad AC = 21$$

$$\begin{aligned} 6^2 + x^2 &= 10^2 \\ 8^2 + y^2 &= 17^2 \end{aligned}$$

$$\text{Area} = 168$$

$$\frac{1}{2} d_1 \cdot d_2$$

$$\frac{1}{2}(16)(21)$$