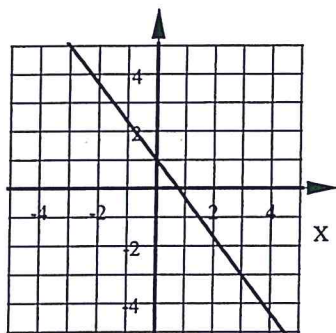


# Algebra 1 6th Bellwork Tuesday, January 12, 2016

Find the slope of the line containing each pair of points. Reduce fractional answers.

1.  $(-9, 18) \& (6, -2)$       2.  $(-7, -4) \& (15, -4)$       3.  $(8, -11) \& (8, 5)$

4. Find the slope of the line shown in this graph.



5. Below is a chart showing how much a plumber would charge to come out and work on your leak. What does the plumber charge per hour for labor?

# hour	\$ total charge
1	99
3	147
7	243
13	387

# Algebra 1 6th Bellwork Tuesday, January 12, 2016

Answers

Find the slope of the line containing each pair of points. Reduce fractional answers.

1.  $(-9, 18) \& (6, -2)$

$$\frac{18 - (-2)}{-9 - 6} = \frac{20}{-15} = -\frac{4}{3}$$

2.  $(-7, -4) \& (15, -4)$

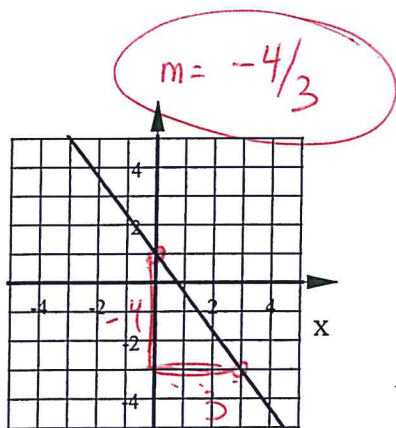
$$\frac{-4 - (-4)}{15 - (-7)} = \frac{0}{22} = 0$$

3.  $(8, -11) \& (8, 5)$

undefined

$$\frac{5 - (-11)}{8 - 8} = \frac{16}{0}$$

4. Find the slope of the line shown in this graph.



5. Below is a chart showing how much a plumber would charge to come out and work on your leak. What does the plumber charge per hour for labor?

# hour	\$ total charge
1	99
3	147
7	243
13	387

$$3 - 1 = 2$$

$$147 - 99 = 48$$

$$\frac{\$48}{2 \text{ hrs}}$$

$$= \$24/\text{hour}$$