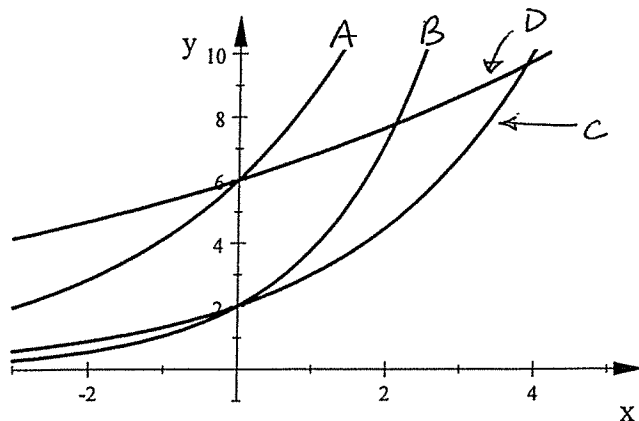


Algebra 1 Hwk #10 Sec 8-7 Spring 2015

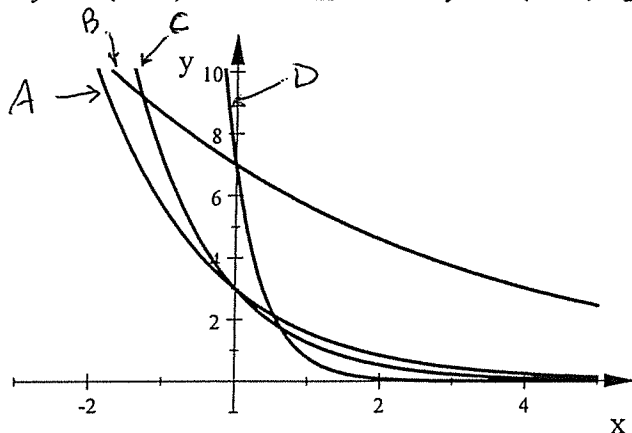
Match each graph to its equation.

1. $y = 2(1.5)^x$ _____ 2. $y = 6(1.45)^x$ _____ 3. $y = 2(1.9)^x$ _____ 4. $y = 6(1.13)^x$ _____



Match each graph to its equation.

5. $y = 3(0.42)^x$ _____ 6. $y = 7(0.81)^x$ _____ 7. $y = 7(0.11)^x$ _____ 8. $y = 3(0.53)^x$ _____



9. Give the y intercept for each graph.

- a) $y = 3.5(1.26)^x$ b) $y = -6(0.0031)^x$ c) $y = 2^x$

Use the following functions for 10 and 11:

- A. $y = 95(1.03997)^x$ B. $y = 11.7(1.50086)^x$ C. $y = 850(1.4289)^x$

10. Which of these functions is the steepest? Explain.

11. Which of these functions is the flattest? Explain.

Use the following equations for 12 and 13:

- A. $y = 200(0.367)^x$ B. $y = 37(0.429)^x$ C. $y = 16(0.195)^x$

12. Which of these functions is the steepest? Explain.

13. Which of these functions is the flattest? Explain.