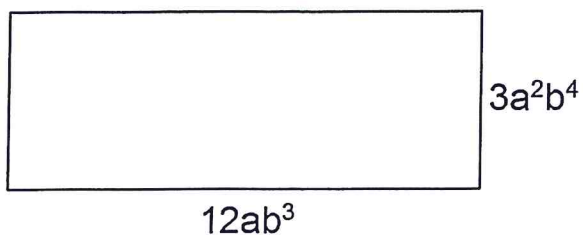


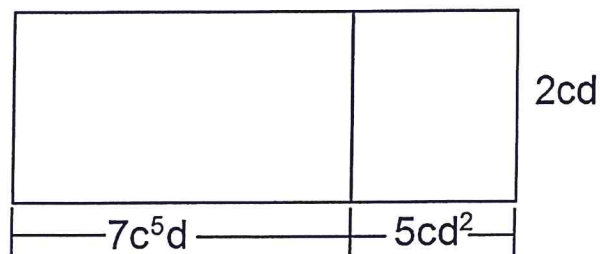
# Algebra 1 Bellwork Tuesday, February 24, 2015

For each of the rectangle below write an expression that represents its area.

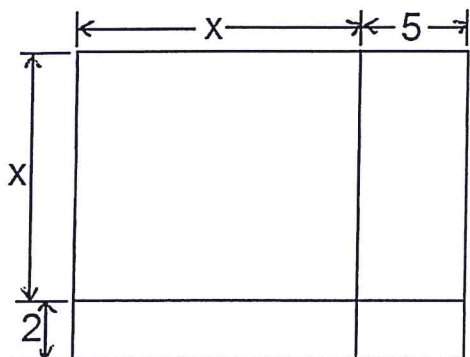
1.  $A =$



2.  $A =$

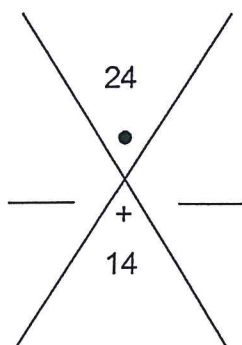


3.  $A =$

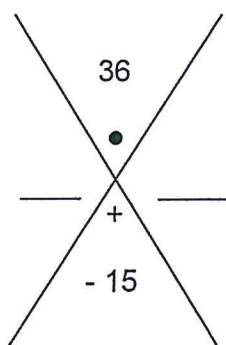


For the remaining problems your job is to find two numbers to put on the left and right side of the X so that they multiply to the number at the top and add to the number at the bottom.

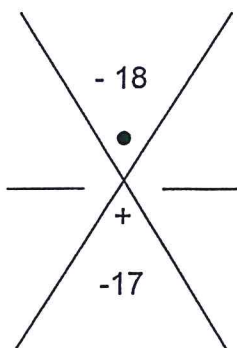
4.



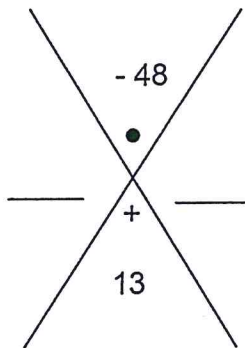
5.



6.



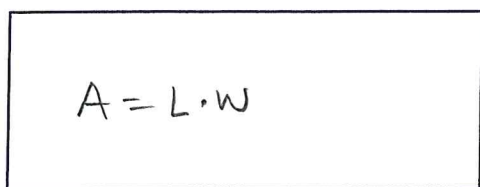
7.



For each of the rectangle below write an expression that represents its area.

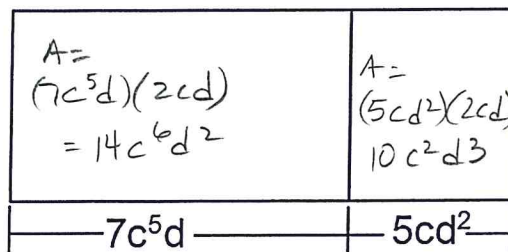
1.  $A = (12ab^3)(3a^2b^4) = 36a^3b^7$

2.  $A = 14c^6d^2 + 10c^2d^3$



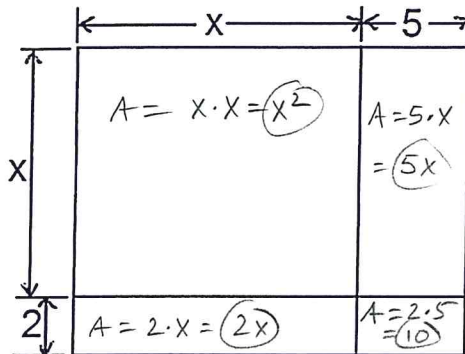
$12ab^3$

$3a^2b^4$



$2cd$

3.  $A = x^2 + 5x + 2x + 10 = x^2 + 7x + 10$



For the remaining problems your job is to find two numbers to put on the left and right side of the X so that they multiply to the number at the top and add to the number at the bottom.

