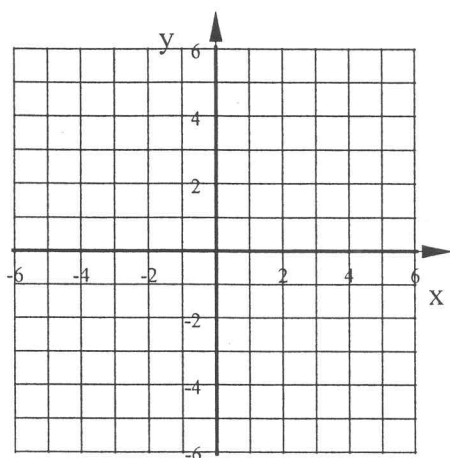


1. For your birthday your father gives you 110 baseball cards. Your friend has the same birthday as you was given 20 cards for his birthday. You plan on buying 5 new cards each week. Your friend plans on buying 8 cards each week.

In how many weeks will the two of you have the same number of baseball cards?

2. Graph these two lines on the same graph below. $y = -2x + 5$ and $y = 2x - 3$
What is their point of intersection? What does this point represent?



1

Answers

1. For your birthday your father gives you 110 baseball cards. Your friend has the same birthday as you was given 20 cards for his birthday. You plan on buying 5 new cards each week. Your friend plans on buying 8 cards each week.

In how many weeks will the two of you have the same number of baseball cards?

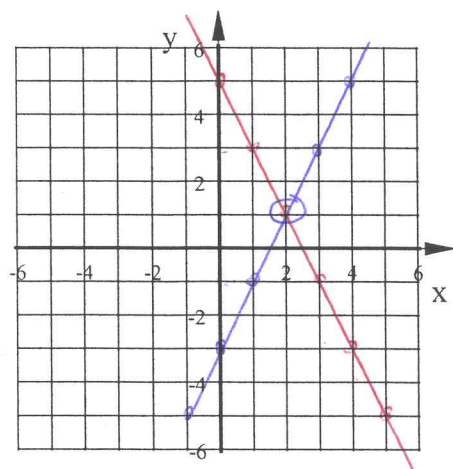
You
 $T = 110 + 5W$

Friend
 $T = 20 + 8W$

$T = \text{TOTAL \# cards}$
 $W = \text{\# weeks}$

in 30 weeks the two of you will have the same # of cards

2. Graph these two lines on the same graph below. $y = -2x + 5$ and $y = 2x - 3$
What is their point of intersection? What does this point represent?



• point of intersection (2, 1)

• This is the only point that is on both lines

• this point is the solution to the system of linear eq's