

Algebra 1 Bellwork Monday, October 27, 2014

Find the slope of the line containing each pair of points. Reduce fractional answers.

1. $(4, 13)$ & $(-6, -2)$

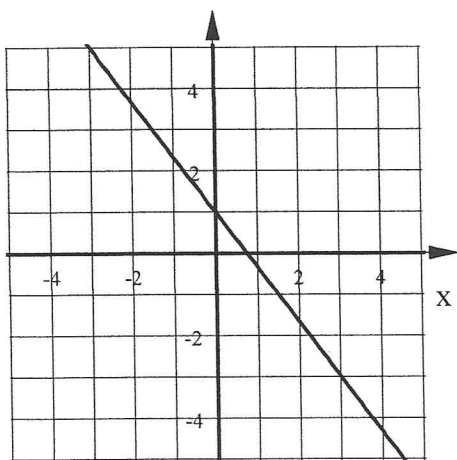
2. $(5, -33)$ & $(-3, 23)$

3. $(8, -11)$ & $(8, 5)$

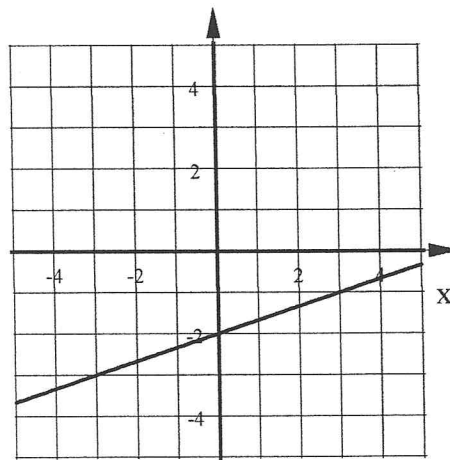
4. $(-9, -4)$ & $(15, -4)$

Find the slope of the line shown in each graph.

5.



6.



7. Below is a chart showing how much a plumber would charge to come out and work on your leak.

# hour	\$ total charge
1	99
3	147
7	143
13	387

a) Find the rate of change for the Total Charge.

b) What does this number represent?

Algebra 1 Bellwork Monday, October 27, 2014

Answers

Find the slope of the line containing each pair of points. Reduce fractional answers.

1. $(4, 13) \& (-6, -2)$

2. $(5, -33) \& (-3, 23)$

$$m = \frac{13 - (-2)}{4 - (-6)} = \frac{15}{10} = \boxed{\frac{3}{2}}$$

$$m = \frac{23 - (-33)}{-3 - 5} = \frac{56}{-8} = \boxed{-7}$$

3. $(8, -11) \& (8, 5)$

4. $(-9, -4) \& (15, -4)$

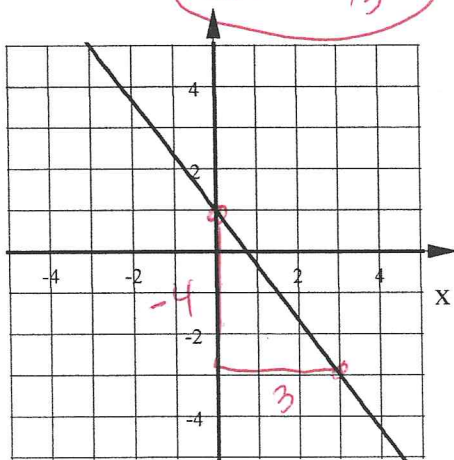
m is undefined

$m = 0$

Find the slope of the line shown in each graph.

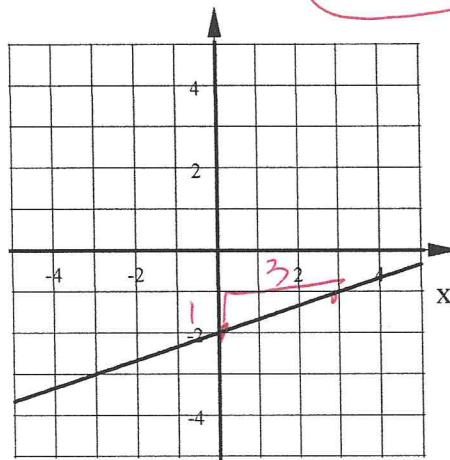
5.

$m = -4/3$



6.

$m = 1/3$



7. Below is a chart showing how much a plumber would charge to come out and work on your leak.

# hour	\$ total charge
1	99
3	147
7	143
13	387

$3 - 1 = 2$ $147 - 99 = 48$

a) Find the rate of change for the Total Charge.

$\$48/2\text{hrs} = \$24/\text{hr}$

b) What does this number represent?

the amount of money the plumber charges per hour to work at your house.