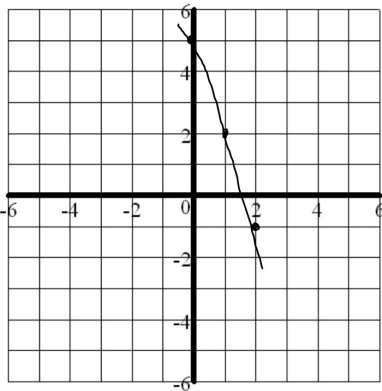


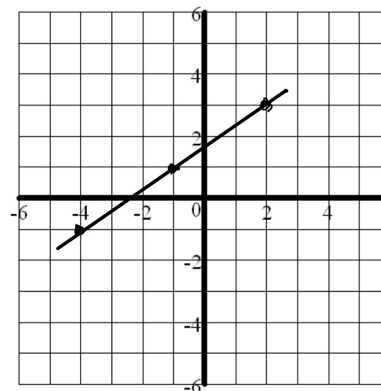
Graph each line with at least 3 points.

1. $y - 2 = -3(x - 1)$

$$y = -\frac{3}{1}x + 5$$

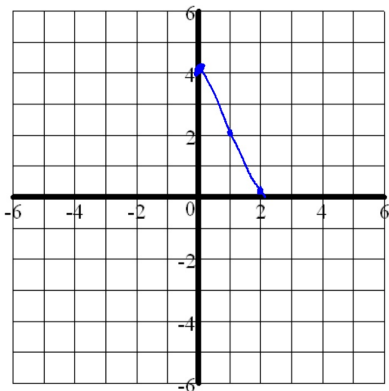


2. $y + 1 = \frac{2}{3}(x + 4)$



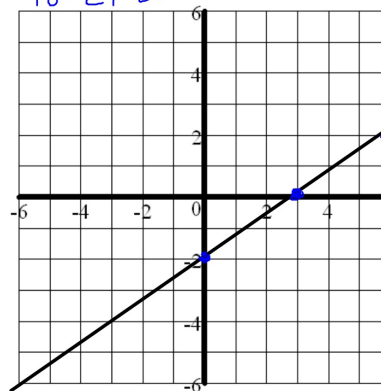
$(-4, -1)$
 $y - y_1 = m(x - x_1)$

3. $30x + 15y = 60$



$$\begin{aligned} 30x + 15y &= 60 - 30x \\ -30x \quad \frac{15}{15} &= \frac{60 - 30x}{15} \\ y &= 4 - 2x \end{aligned}$$

4. $8x - 12y = 24 - 8x$
 $48 - 24 = 24 - 12$



$x \quad y$
 $(6, 2)$
 $y = -2 + \frac{2}{3}x$