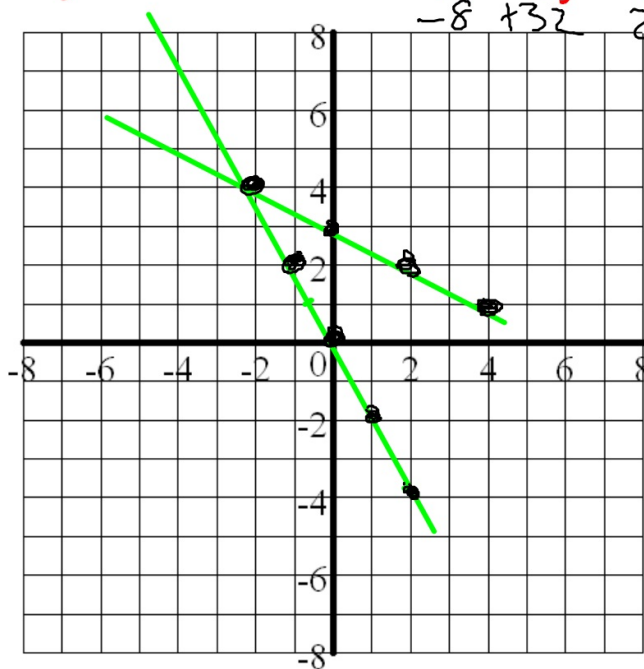


1. Solve this system of linear equations by graphing:

$$y = -2x$$

$$4x + 8y = 24$$



$(-2, 4)$

2. PQS phone service charges \$45 per month and \$0.15 per text message. No-Tell phone service charges \$55 per month and \$0.10 per text. Find the number of text messages for which the monthly bill for both companies would be the same.

$$\begin{array}{rcl}
 45 + .15t & = & 55 + .10t \\
 -45 & & -45 \\
 \hline
 .15t & = & 10 + .10t \\
 -.10 & & -.10 \\
 \hline
 .05t & = & 10
 \end{array}$$

200 texts