

Graphing Line that are in Slope-Intercept Form:

Graph each line using at least 3 points.

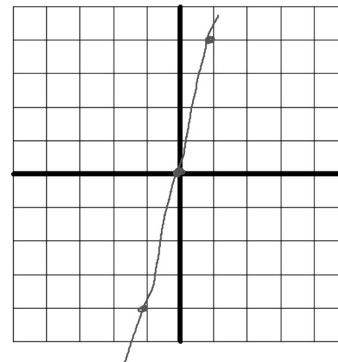
1. $y = 4x$

2. $y = -\frac{5}{6}x + 2$

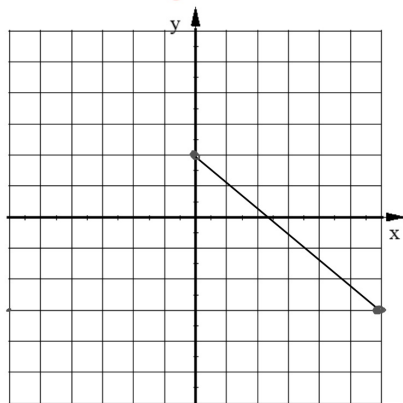
3. $y = 0.6x - 3$

4. $y = x - 1$

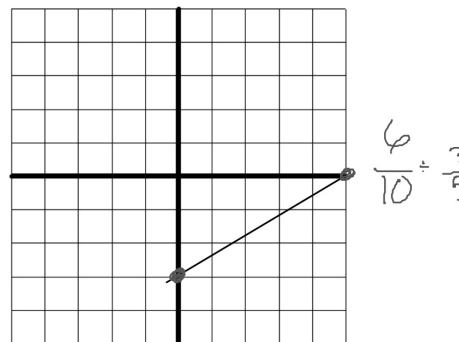
1. $y = 4x$



2. $y = -\frac{5}{6}x + 2$



3. $y = 0.6x - 3$



4. $y = x - 1$

