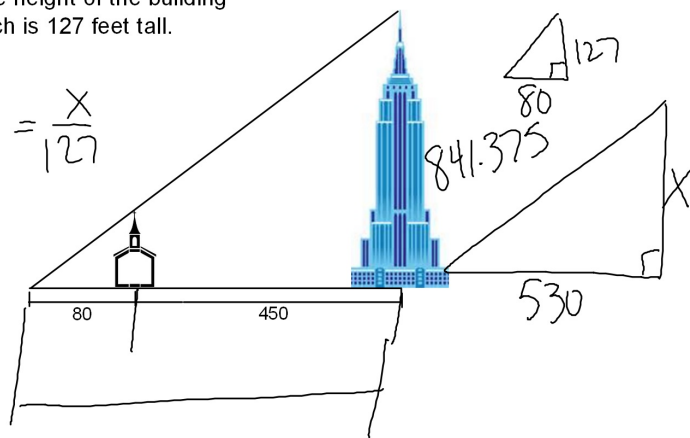


1. Find the height of the building if the church is 127 feet tall.

$$\frac{530}{80} = \frac{x}{127}$$

$\frac{B}{L}$



2. Solve this proportion.

$$\frac{2w^3 + 8}{w^1} = \frac{6w^2 + 20}{3}$$

$$6w^3 + 24 = 6w^3 + 20w$$

$$\frac{24}{20} = \frac{20w}{20}$$

$$1.2 = w$$

3. A store sells only running shoes and basketball shoes. On one shelf of the store the ratio of running shoes to basketball shoes is 3:7. If there are a total of 750 shoes in the store, how many are running shoes?

$$\frac{3R}{7B} = \frac{xR}{750 \text{ TOT}}$$

$$R = 225$$

4. The scale on a map is 1.5 in = 50 miles. If two cities are 8 inches apart on the map how far apart are they in real life?

$$\frac{1.5 \text{ in}}{50 \text{ mi}} = \frac{8 \text{ in}}{x \text{ mi}}$$

$$266.67 \text{ mi}$$