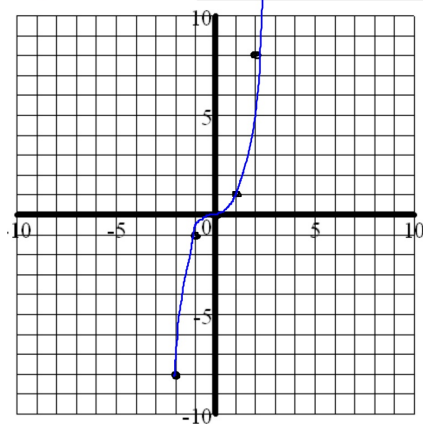
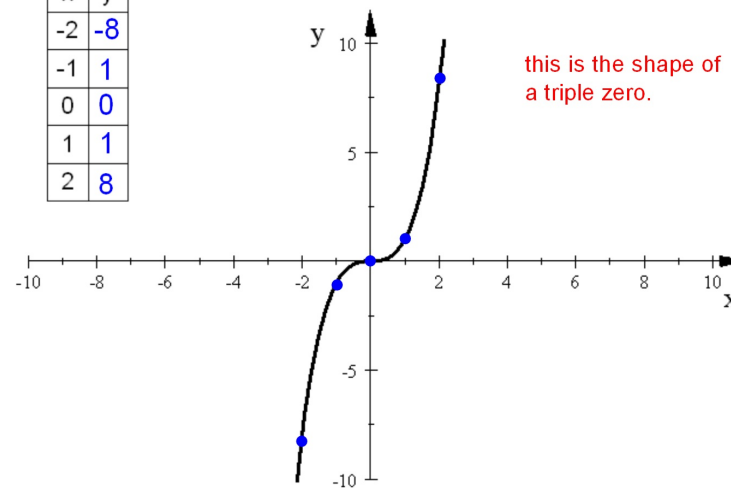


$$y = x^3$$

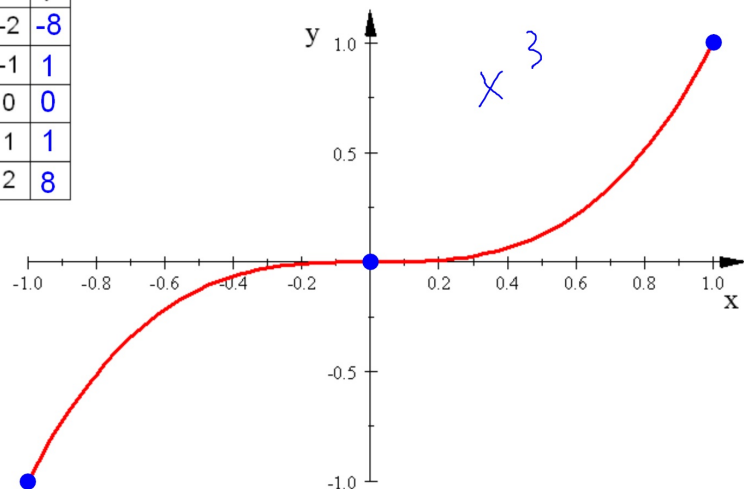


| x | y |
|----|----|
| -2 | -8 |
| -1 | -1 |
| 0 | 0 |
| 1 | 1 |
| 2 | 8 |

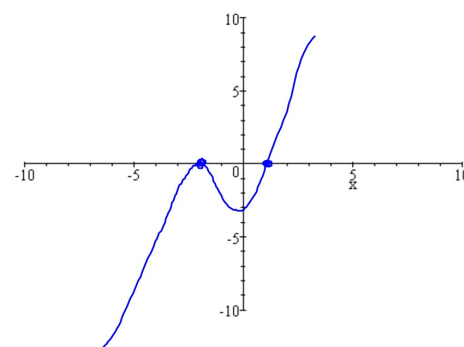
| x | y |
|----|----|
| -2 | -8 |
| -1 | 1 |
| 0 | 0 |
| 1 | 1 |
| 2 | 8 |



| x | y |
|----|----|
| -2 | -8 |
| -1 | 1 |
| 0 | 0 |
| 1 | 1 |
| 2 | 8 |



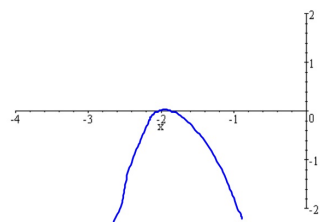
1. Graph $y = (x-1)(x+2)^2$ in a Standard Window and sketch it below:



2. Investigate the graph around each zero

Around -2 : Use the following window: $x : [-4, 0]$ & $y : [-2, 2]$

Sketch the graph below:



-2 is a double zero.

$$(x+2)^2$$

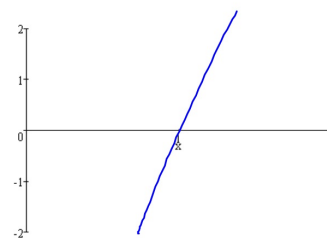
Double zeros look like
Parabolas.

Describe what the graph looks like in this window.

Parabola

Around 1 : Use the following window: $x : [0, 2]$ & $y : [-2, 2]$

Sketch the graph below:



1 is a single zero.

Single Zeros look like
a line passing through
the x-axis.

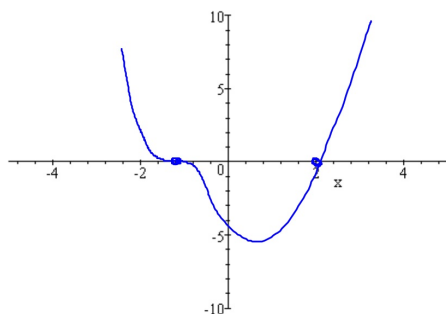
$$(x-1)^1$$

Describe what the graph looks like in this window.

Line

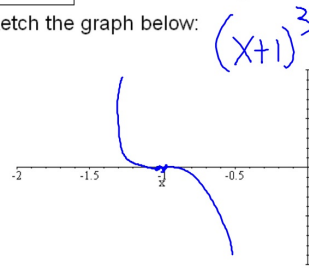
3. Graph $y = (x+1)^3(x-2)$ in the following window and sketch it below:

Window: $x : [-5, 5]$ & $y : [-10, 10]$



Around -1 : Use the following window: $x : [-2, 0]$ & $y : [-2, 2]$

Sketch the graph below:



$$(x+1)^3$$

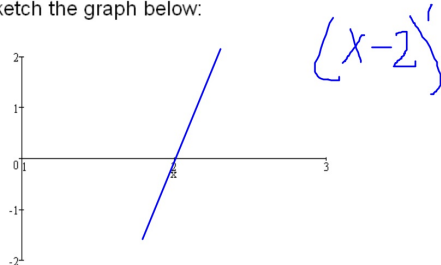
-1 is a triple zero

Describe what the graph looks like in this window.

Triple Zeros look like:
they pass through the
x-axis but flatten out
as they pass through.
Look like a cubic function

Around 2: Use the following window: $x : [1, 3]$ & $y : [-2, 2]$

Sketch the graph below:



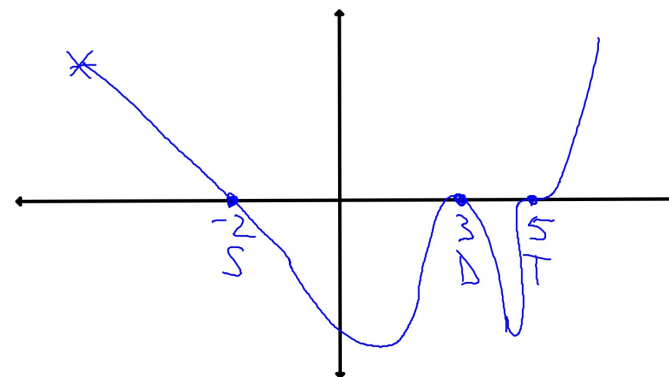
2 is a single zero.

Describe what the graph looks like in this window.

Single Zeros look like a line passing through the x-axis.

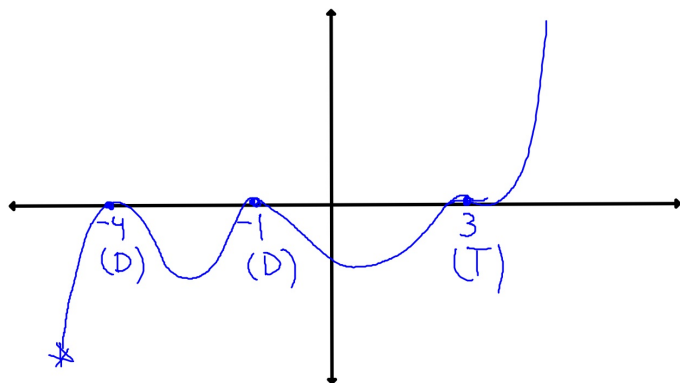
Sketch this function using the shapes of the zeros. Start in the second quadrant.

$$y = (x+2)(x-3)^2(x-5)^3$$



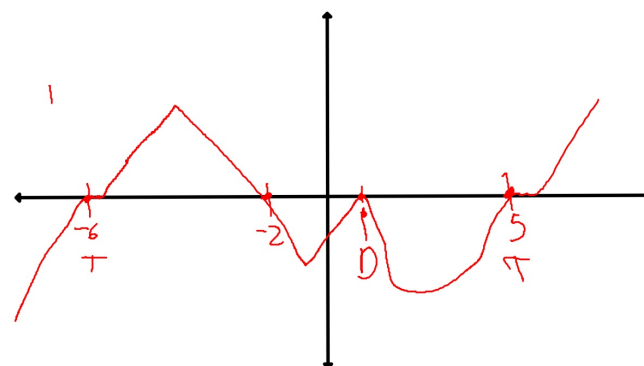
Sketch this function using the shapes of the zeros. Start in the third quadrant.

$$y = (x+4)^2(x+1)^2(x-3)^3$$

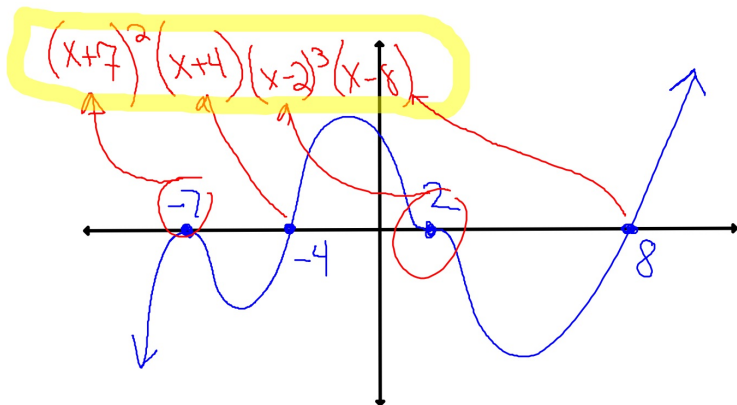


Sketch this function using the shapes of the zeros. Start in the third quadrant.

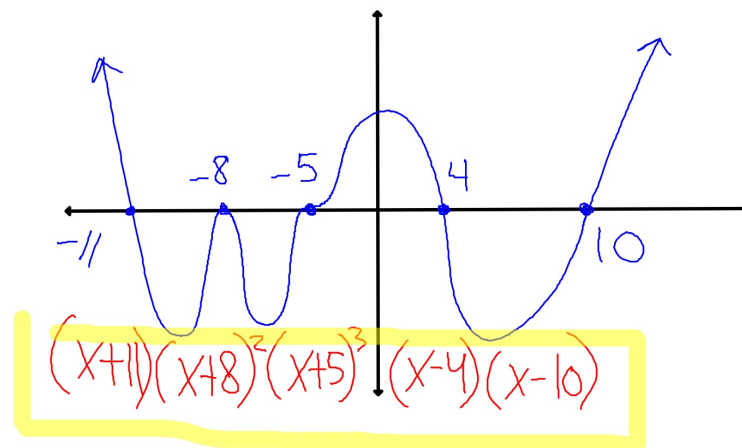
$$y = (x-5)^3(x+6)^3(x+2)(x-1)^2$$



Write a possible equation for the function shown in this graph.



Write a possible equation for the function shown in this graph.



Write a possible equation for the function shown in this graph.

