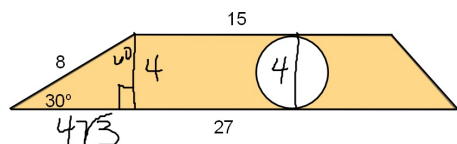


# Algebra 2 Bellwork Friday, November 15, 2013

1. Find the area of the shaded region.

Area of a circle:  $A = \pi r^2$  Area of a trapezoid:  $A = \frac{1}{2}(b_1 + b_2)h$

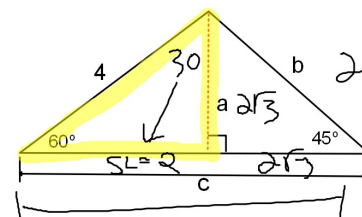


$$A = \frac{1}{2}(27+15)4 = 84$$

$$A = \pi r^2 = 4\pi$$

$$84 - 4\pi$$

2. Find the value of each variable. Leave answer in simplified radical form.



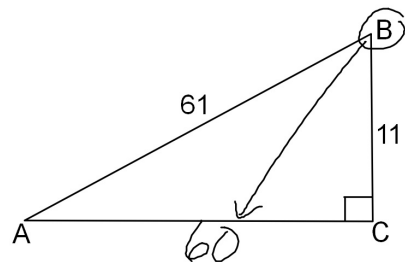
$$2\sqrt{3} \cdot \sqrt{2} = 2\sqrt{3 \cdot 2} = 2\sqrt{6}$$

$$a = 2\sqrt{3}$$

$$b = 2\sqrt{6}$$

$$c = 2 + 2\sqrt{3}$$

3. Find each ratio as a fraction.



$$\cos A = \frac{60}{61}$$

$$\sin B = \frac{60}{61}$$

$$\tan A = \frac{11}{60}$$

SOH (CAH) TOA

$$\tan B = \frac{60}{11}$$