

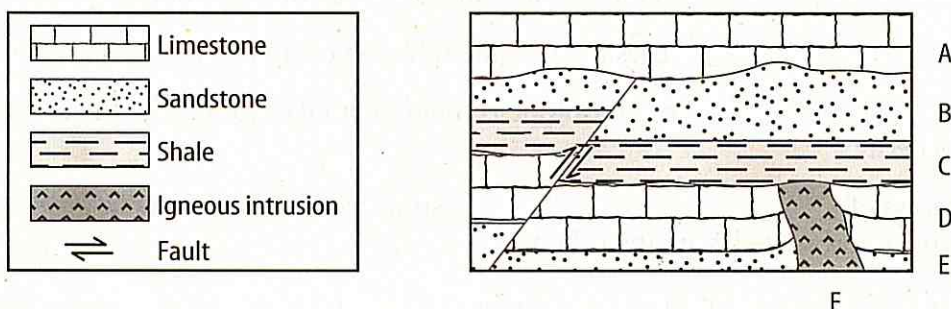
Chapter Test C (continued)

- _____ 14. Some isotopes are unstable and decay into other isotopes and particles.

II. Understanding Concepts

Skill: Interpreting Data

Directions: Study the figure of the rock record. Then answer the questions on the lines provided.



1. List events A–F in the order in which they occurred, beginning with the oldest event.

2. Describe the two interruptions to the rock layer.

3. Would it be possible for a geologist to find the same index fossil in layers C and B? Why?

Skill: Categorizing

Directions: Label each type of fossil in the blank next to its description.

- _____ 4. A saber-toothed tiger's tooth is found with its gap filled with minerals from groundwater.
- _____ 5. A thin layer of carbon residue forms the silhouette of a fern leaf.
- _____ 6. In a swampy region, large volumes of plant matter are completely carbonized.
- _____ 7. The hard part of a snail shell decays, leaving behind a cavity in the rock.
- _____ 8. A starfish decays, leaving a cavity in a rock. The cavity is then filled with mineral-rich water.