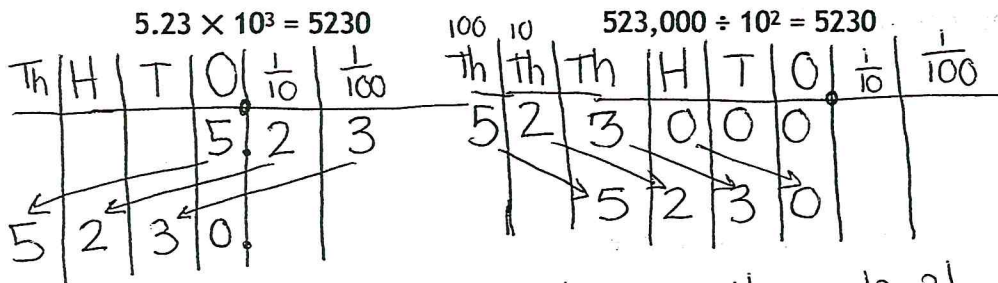


Grade 5 Module 1 End-of-Module Review & Study Guide

Name Key

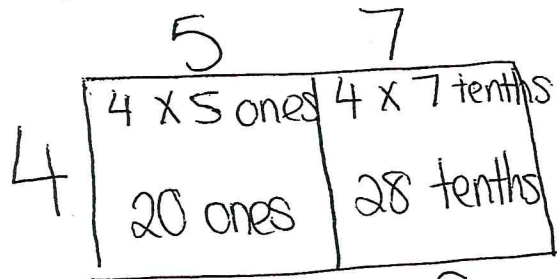
Date _____

1. The following equations involve different quantities and use different operations, yet produce the same result. Use a place value chart and words to explain why this is true.



When I multiplied, the digits moved 3 places to the left, b/c they get larger. When I divide the digits moved 2 places to the right, b/c they decreased.

2. Use an area model to explain the product of 5.7 and 4. Write the product in standard form, word form, and expanded form.



$20 + 2.8 = 22.8$ standard form

word form: twenty-two and eight tenths

expanded form: $2 \times 10 + 2 \times 1 + 8 \times \frac{1}{10}$