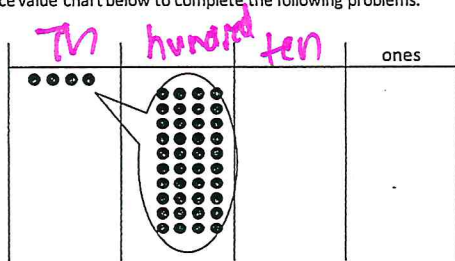


Name \_\_\_\_\_

Date \_\_\_\_\_

Use the disks in the place value chart below to complete the following problems:



1. Label the place value chart. ✓
2. Tell about the movement of the disks in the place value chart by filling in the blanks to make the following equation match the drawing in the place value chart:

$$400 \times 10 = 4,000$$

3. Write a statement about this place value chart using the words 10 times as many.

4,000 is 10 times as many as 400.