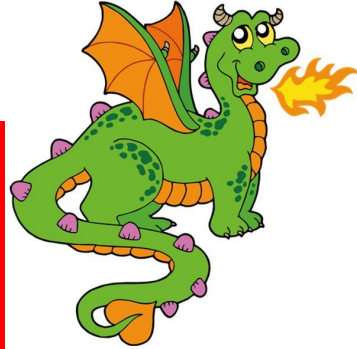


# **Welcome Parents 2018 to Howard Elementary School!**



**Ms. Fleming**  
**4th Grade      Room 14**

# PBIS RULES

## Be Respectful

- Use kind words and actions
- Follow directions
- Take care of personal and school property

## Be Responsible

- Follow directions the first time they are given
- Be prepared
- Be honest
- Best effort

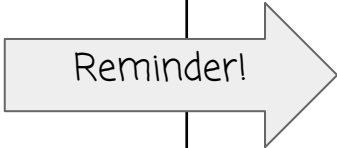
## Be Safe

- Keep hands and feet to yourself
- Use peaceful solutions
- Sit correctly on chairs
- Use classroom materials properly



# PBIS- HOWARD'S POSITIVE BEHAVIOR SUPPORT SYSTEM

<b>GREEN=</b> Earn a punch	<b>YELLOW=</b> Loss of a privilege	<b>BLUE=</b> Complete a "think sheet"	<b>RED=</b> Principal's office and phone call home
-------------------------------	---------------------------------------	--	---



**\*Your child's card color will be colored in every day in his/her planner! Monthly prizes will be given, along with Dragon Dollar drawings each Friday!**

# SNACK/WATER TIME!

- **Make sure to send a daily snack! Fruits, veggies, crackers, and yogurt are allowed. Please make sure your child's snack is healthy!**
- **Water is a must! Thermoses are best, but water bottles are just fine too!**



# NWEA TESTING

NWEA testing will start in the beginning of September (fall), then again in January (winter), and finally in May (spring).

**Reading- beginning of year, 199**

**Math- beginning of year, 203**

**Science-beginning of year, 195**

**Language- beginning of year, 200**

# READING

**DRA testing will begin next week on all students to get a current reading level. Summer loss is common!**

**Reading groups will begin shortly once DRAs are complete. Students will be placed in groups with children of the same reading level. Higher students will work more independently and check in with the teacher a few times per week. Students who are reading below grade level will be double dosed each day.**

**Students will take home a reading book each night. They should be rereading books/chapters daily. (expected)  
This will help build their fluency and comprehension skills. At least 20 minutes per day.**

**Students will often have reading response questions to answer based on a chapter they have read. These questions are designed to increase comprehension, and target skills we are working on in each reading group. Questions should always be answered in complete sentences.**

# MATH FOR 4TH GRADERS...

## **\*New math program.... EUREKA MATH**

**Math is approximately 90 minutes per school day. The time may be broken up. This program is new to the district. We are to follow the manual very strictly the first year to get students used to the procedures, signals, and drills. It is very hands on. Students practice math fluency daily using wipe erase boards, and doing "sprints". They will also have classwork, a time to debrief, daily homework (comes with parent explanation), and an "exit ticket" for understanding.**

**When helping your children with homework, PLEASE follow the guidelines on the homework directions! Parent tip sheets are also available on my classroom blog.**

# MATH GOALS

Computation is so important in 4th grade!

In addition to our Eureka Math program, students will be working on individual math goals.

Each student will start with a math goal doing addition with regrouping, then progress to subtraction with regrouping, long multiplication, and long division, at their own pace.

Goals are written in the back of their math notebooks, along with the date the goal was met.





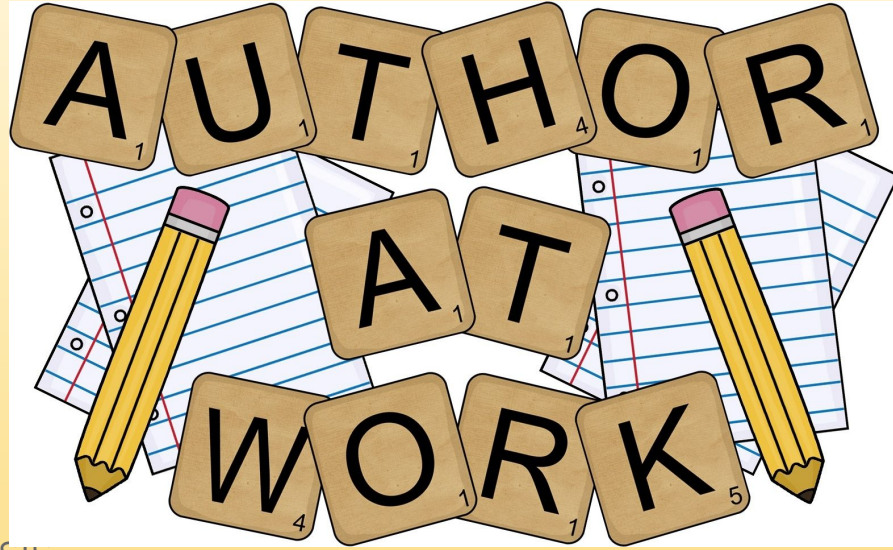
# WRITING

Narrative

Informational

Opinion

Text-Dependent Analysis

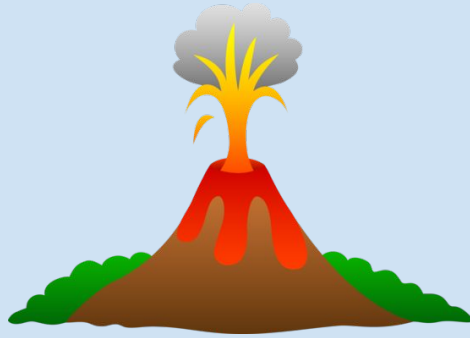


Instruction will focus on teaching students to write in complete paragraphs, and teaching the essay format.

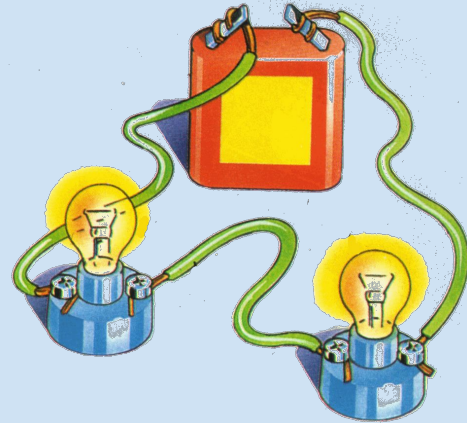
# NGSS SCIENCE STANDARDS FOR GRADE 4 (SCIENCE)

## **Science**

### **Processes that shape Earth**



### **Energy & Waves (Physical)**



### **Structure & Function- Human Systems(Life)**

# SOCIAL STUDIES- 4TH GRADE

Geography: Regions of the United States, map skills

Human Geography: Migration & Immigration

United States Government

Economics



# HOMework

- ~20 minutes of Daily Reading, and complete a daily reading log (parents sign or initial each day)

**\*books from book bags, library books, or books from home... please let me know if your child needs more leveled reading material. I have LOTS of books!**

- Eureka Math tearout worksheets
- Occasional homework: unfinished classwork, reading response questions, or project
- Weekly spelling list

**\*All homework is written in the daily planner each day. Parents must sign or initial every night! You may also jot me a note here too.**

**When homework is turned in COMPLETED and ON TIME, students will \_\_\_\_\_!**

# MY LEARNING PLAN



s

	Fall	Winter	Spring
Reading (NWEA)			
Reading (DRA)			
Math (NWEA)			
Language (NWEA)			

# 4TH GRADE RESOURCES FOR PRACTICE AT HOME

- Clever site @dearbornschools.org
- Moby Max
- Khan Academy
- Readworks.com
- Master multiplication facts
- [Social Studies Unit Resources on Classroom Blog](#)
- Check grades on Parent Connect
- Google Classroom

## HOW TO CONTACT ME...



### **Blog:**

**<https://iblog.dearbornschools.org/mfleming/>**

**Email: [fleminm@dearbornschools.org](mailto:fleminm@dearbornschools.org)**

**Child's planner: Write me a note any day in your child's planner!**